

# Kick<sup>®</sup>

Pure Navigation





## Kick Start

### Pure Navigation

- Compact and portable
- Intuitive user interface
- Optical tracking with laser guidance
- Powerful computer for fast navigation
- High-quality visualization in full HD
- Expandable with Buzz<sup>®</sup> and external displays



## Kick Up

### Smart connections

- Access to PACS and network-based devices through high-speed ports
- Flexible data transfer with CD drive and USB-to-Ethernet adapter
- Quick integration of surgical devices
- 4K and 3D display integration for high-end visualization



## Kick Up

### Efficient data management

- Easy upload and storage of patient data
- Patient-centric data handling for optimized system operation and intuitive usability
- Streaming and recording functionalities for immediate O.R. documentation
- Image enrichment for intraoperative clinical decision making



## Kick Off

Extended functionality

- Expand with Buzz
- Remote access of information
- Connect with multiple external displays
- Additional integrated O.R. functionalities

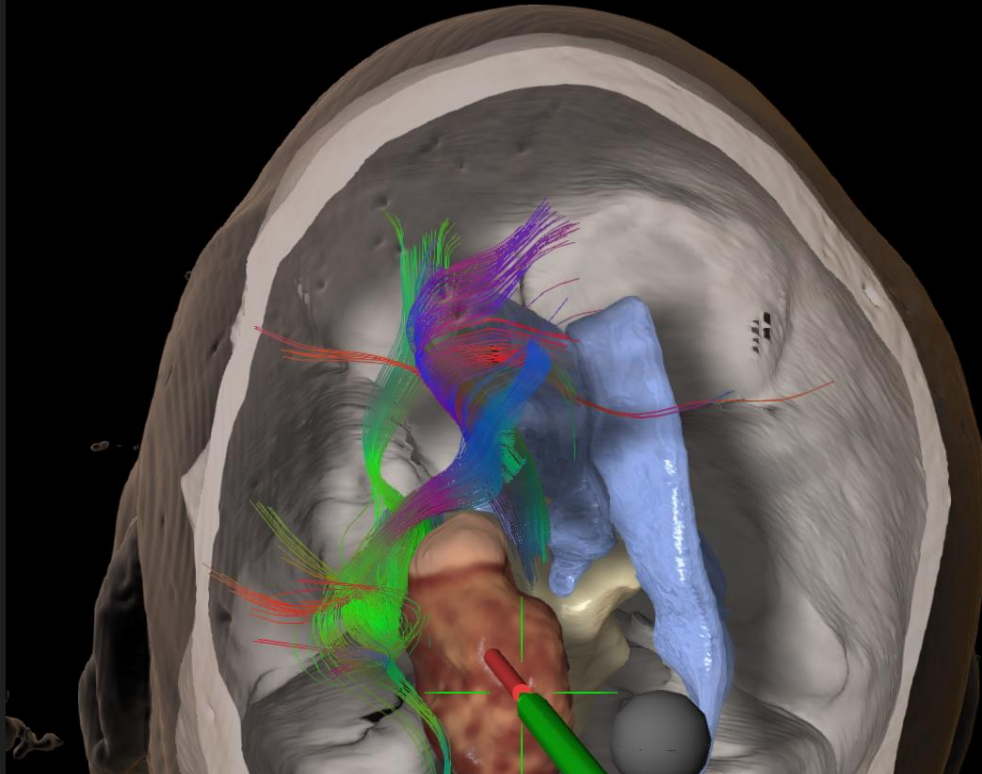


## Kick EM

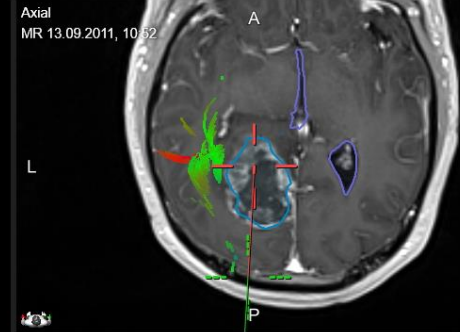
Optional electromagnetic tracking

- EM technology eliminates line-of-sight issues and enables pinless cranial and ENT procedures
- Large tracking volume and articulated arm allow for flexible positioning of field generator
- Ergonomic remote control pointer minimizes screen interaction
- Instructional animations provide detailed user guidance throughout setup

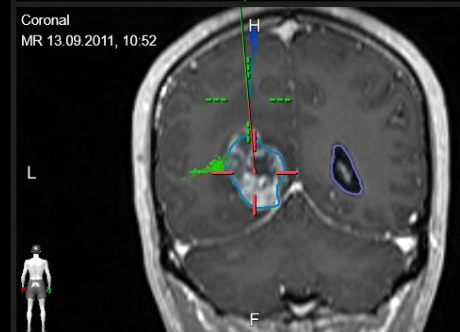
Smart Approach  
MR 13.09.2011, 10:52



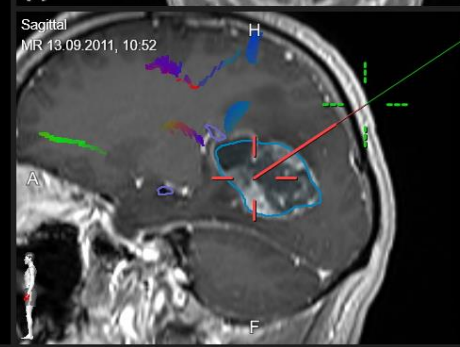
Axial  
MR 13.09.2011, 10:52



Coronal  
MR 13.09.2011, 10:52

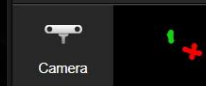


Sagittal  
MR 13.09.2011, 10:52



Alerts Data Home

Navigation



Freeze

View

Offset

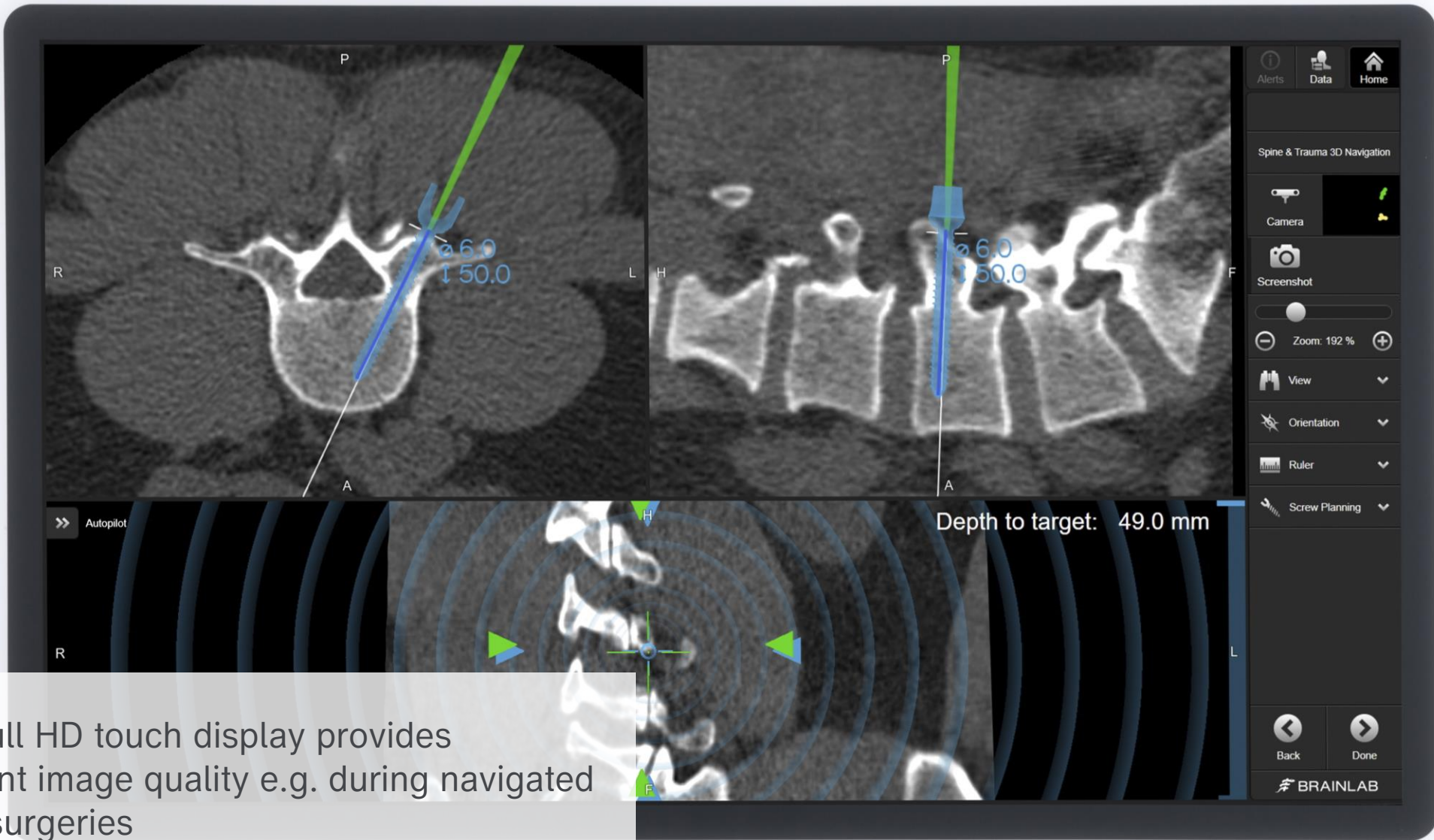
Craniotomy

Back Resection

BRAINLAB

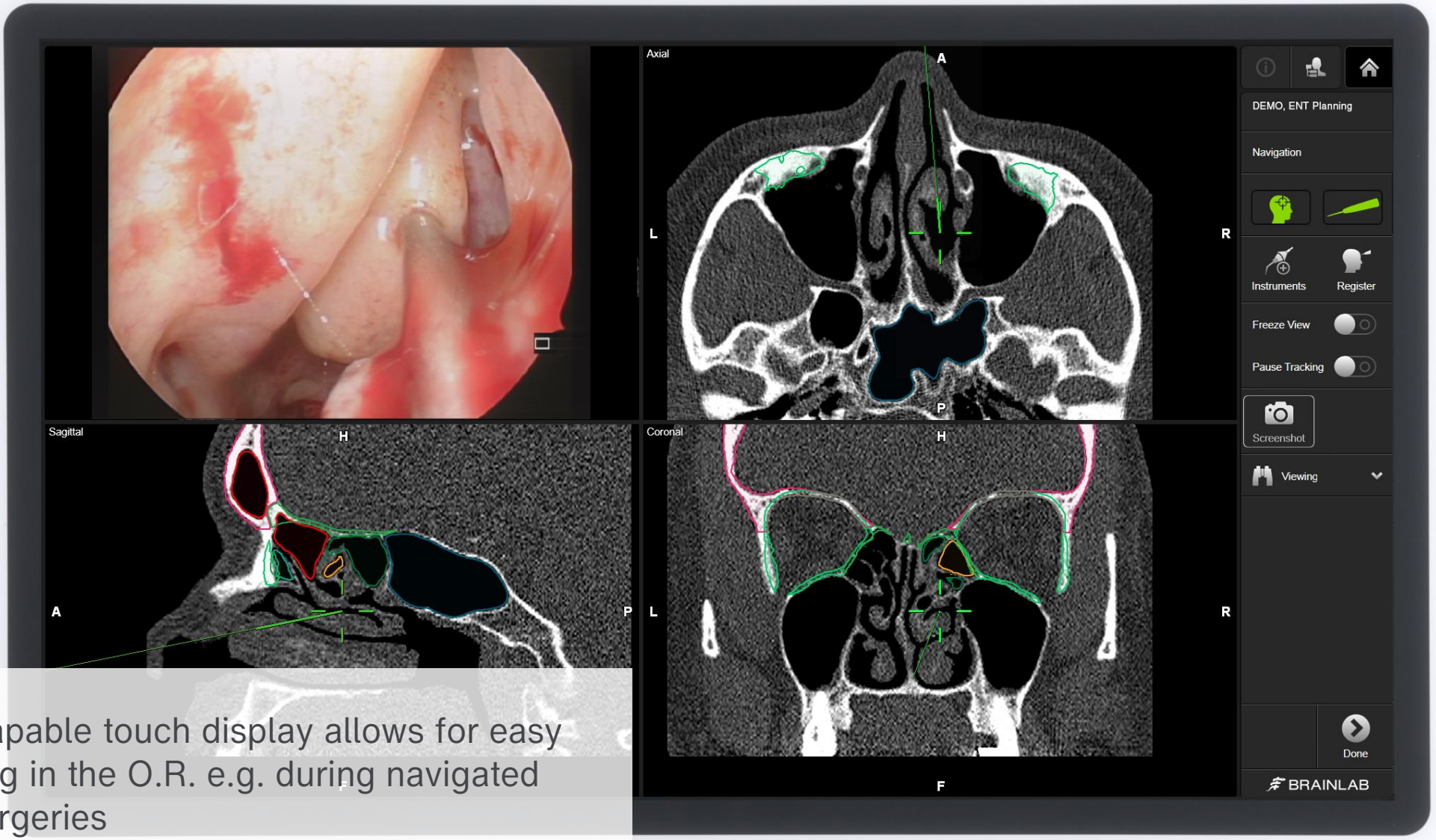
Large RAM and powerful SSD hard drive enable fast navigation e.g. during cranial surgeries with high data volume

BRAINLAB



21.5" full HD touch display provides excellent image quality e.g. during navigated spinal surgeries





The drapable touch display allows for easy handling in the O.R. e.g. during navigated ENT surgeries



The camera equipped with a positioning laser offers a 300 cm pyramid tracking volume



All components fit into customized cases for practical transportation



Separate telescopic camera stands for  
setup flexibility



Interface connection panel for rapid external device integration



 BRAINLAB  
kick

Optional CD drive for flexible data transfer



brainlab.com

