



## **VISULAS green from ZEISS**

Unmatched workflow efficiency in laser therapy



# Stay focused on what counts.

ZEISS VISULAS green

## Give patients your uninterrupted attention

Equipment-related workflow distractions during laser therapy are not only cumbersome, they can also influence laser treatment performance. VISULAS® green from ZEISS was designed to reduce distractions and let you concentrate on your treatment and patient.

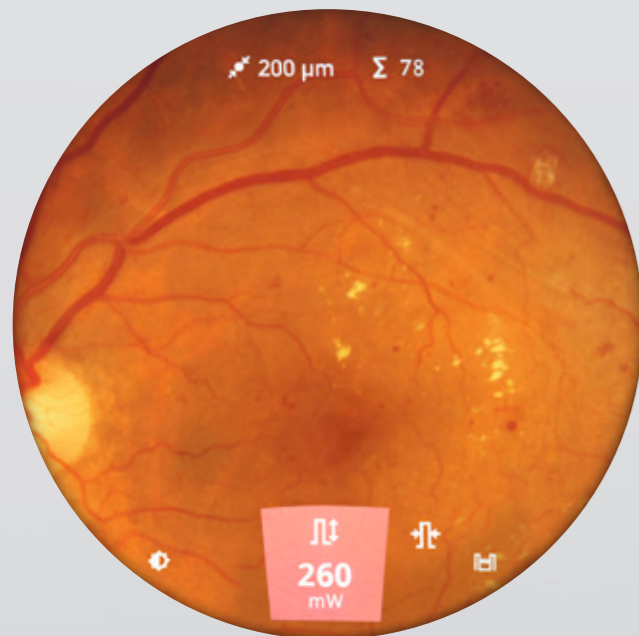
The next generation of VISULAS photocoagulators from ZEISS features the unique combination of **InsightView** and **TouchControl** elements that help you to fully concentrate on the patient. Featuring a modular, compact design and a well-arranged graphical user interface, ZEISS VISULAS green displays treatment summaries which can be exported for documentation.

Experience the unmatched efficiency of ZEISS VISULAS green.



## Maximize your focus

ZEISS VISULAS green incorporates a unique combination of InsightView display and TouchControl center switch to support easy, efficient and highly-focused surgical treatments for retinal diseases and glaucoma. ZEISS VISULAS green turns daily clinical routine into a more convenient and more efficient treatment experience for both you and your patients.



### InsightView display

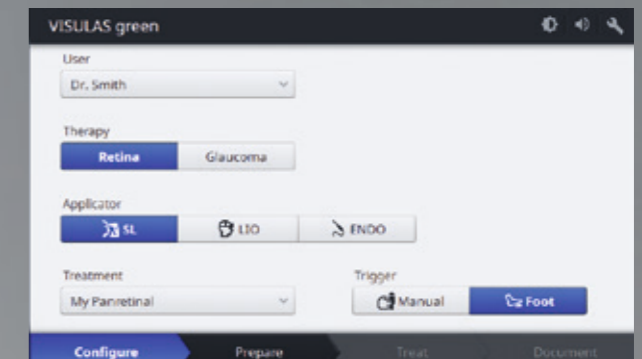
The ability to monitor important treatment settings directly in the eyepiece allows you to stay focused on the therapy session and your patient.

### TouchControl center switch

Changing and adjusting laser parameters while operating the joystick, allows you to stay concentrated on the procedure without any interruption.



## Increase your workflow efficiency



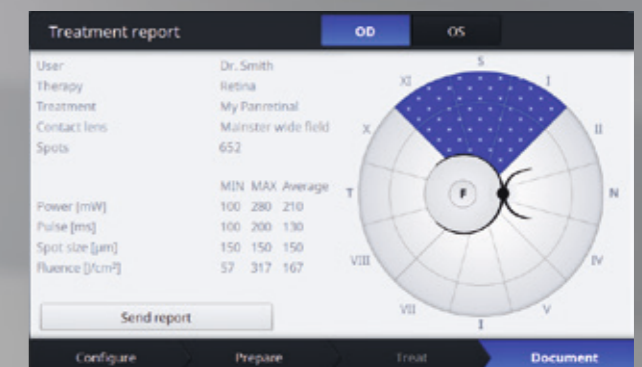
### Configure your treatment protocols

Customize and save your treatment protocols including your preferred contact lens for multiple users and call them up with one touch.



### Prepare and conduct your treatment session

The well-structured and workflow-oriented user interface of ZEISS VISULAS green provides you clear guidance and fast interaction.



### Simplify your treatment documentation

Review the automated treatment parameter summary immediately after the procedure. Create a laser treatment report in the eye care data management system ZEISS FORUM®, elegantly and paperless.



## A customized system for maximum comfort

Designed as a modular and expandable laser workstation, ZEISS VISULAS green is available in a Classic and a Comfort model and is equipped with a choice of single or dual fiber ports. The Comfort model is upgradable to handle multi-spot photocoagulation with the ZEISS *VITE* option to reduce treatment times. Short multi-spot pulse durations create smaller lesion sizes, and decrease the patient's pain perception.

VISULAS green can be customized to suit virtually all types of practice workflows and treatment preferences. A wide range of ZEISS applicators such as laser slit lamp LSL green, VISULINK® 532/U slit lamp adapter, laser indirect ophthalmoscope LIO VISULAS green, or laser endoprobes and high quality accessories compliment the multi-faceted VISULAS green.

### ZEISS VISULAS green system options

Features	Classic	Comfort
	Laser console w/ <b>single</b> or <b>dual</b> fiber port	Laser console w/ <b>single</b> or <b>dual</b> fiber port
InsightView	Upgradeable	Yes
TouchControl center switch	Yes	Yes
TouchControl foot switch	Upgradeable	Upgradeable
Slit lamp magnification levels	8x, 12x, 20x	5x, 8x, 12x, 20x, 32x
<i>VITE</i> multispot photocoagulation option	No	Upgradeable
Joystick with manual trigger & electronic micromanipulator	Only with manual trigger	Yes
Automated treatment parameter summary	Yes	Yes
Ability to manage treatment data in ZEISS FORUM	Upgradeable	Upgradeable

## Technical data VISULAS green from ZEISS

### ZEISS VISULAS green laser system

Laser type	Frequency-doubled solid-state laser
Wavelength	532 nm
Aiming beam	Diode, 620 to 650 nm, adjustable brightness, max. 1 mW at the cornea
Pulse duration (single pulse)	10 to 2,500 ms, cw (max. 180 s)
Pulse duration (multi-spot)	10 to 50 ms
Pulse duration (selective)	150 ns to 5 µs
Pulse interval (single pulse)	10 to 6,000 ms
Max. power	1.5 W at the cornea
Cooling system	Thermoelectric
Rated voltage and frequency	100 V to 240 V AC, 50/60 Hz
Laser console dimensions	H 201 mm x W 230 mm x D 290 mm (H 79 inches x W 91 inches x D 114 inches)
Laser consol weight	≤7 kg (≤15.4 lbs)
Control panel weight	≤3 kg (≤6.6 lbs)

### ZEISS LSL green laser slit lamp

Laser beam delivery	Interlaced with slit illumination system	
Laser treatment spot size	Continuously adjustable, 50–1,000 µm (without contact lens), parfocal, larger spot sizes depending on contact lens used	
Illumination	12 V, 30 W brightness continuously adjustable	
Physician safety filter	True-to-color, fixed (ClearView®)	
	<b>Classic</b>	<b>Comfort</b>
Magnification	8x, 12x, 20x	5x, 8x, 12x, 20x, 32x
	<b>Slit adjustment</b>	
Slit width	<b>In steps</b> 0.2/0.6/1.6/4.4/15.0 mm	<b>Continuous</b> 0.0 to 14.0 mm
Slit height	<b>In steps</b> 1/3/5/7/12/14/15 mm	<b>In steps</b> 1/3/5/9/14 mm
Slit image rotation	<b>In steps</b> 0°/±45°/90°	<b>In steps</b> 0°/±45°/90°
Micromanipulator	Not available	Servo-electric
Weight	≤11.5 kg (≤25.3 lbs)	
Accessories	Tonometer AT 030, co-observation tube, SL-cam 5.0, instrument table, laser safety goggles, contact lenses, laser warning light	



CE 0297



**Carl Zeiss Meditec AG**  
Goeschwitzer Strasse 51–52  
07745 Jena  
Germany  
[www.zeiss.com/visulasgreen](http://www.zeiss.com/visulasgreen)  
[www.zeiss.com/med/contacts](http://www.zeiss.com/med/contacts)

**EN\_31\_020\_00091** Printed in Germany. CZ-VII/2018 International edition: Only for sale in selected countries.  
The contents of the brochure may differ from the current status of approval of the product or service offering in your country. Please contact our regional representatives for more information. Subject to changes in design and scope of delivery and due to ongoing technical development. VISULA 5, InsightView, TouchControl, VISULINK and FORUM are either trademarks or registered trademarks of Carl Zeiss Meditec AG or other companies of the ZEISS Group in Germany and/or other countries.  
© Carl Zeiss Meditec, Inc., 2018. All rights reserved.