



GE HealthCare



# OEC Elite CFD

Premium mobile C-arm portfolio

# OEC Elite CFD

## Clinical versatility

From complex trauma or cardiovascular interventional procedures, to general surgery and pain management, OEC Elite CFD C-arms easily move room to room, quickly boot-up, and intuitively set up imaging for surgeon preference.

## Exceptional images

Exceed expectations with the OEC Elite CFD. Visualize a new level of image quality with a proven imaging chain featuring an ultra-efficient flat panel detector and modern image processing software presented on a 4K UHD display.

## Confident performance

With a focus on unleashing user confidence, dozens of innovative design features are standard in OEC Elite CFD C-arms. From pushing down the hall to around patient tables, to first time users, the OEC Elite CFD performs.



# Exceptional images

## Superb detail

See detail unseen before with the OEC Elite CFD, such as fine 0.008” guidewires in peripheral anatomy or 0.014” in thoracic region or bony detail, metal implants, and soft tissue all at once. The OEC imaging chain ensures detail detected on the flat panel detector is processed with advanced software and ultimately displayed with clarity on a 4K UHD display.

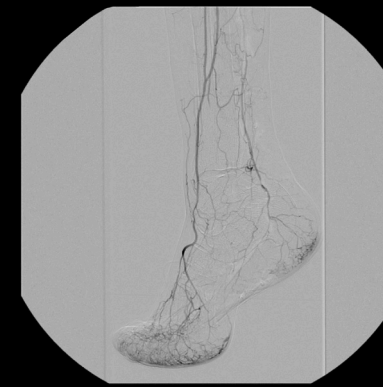
## Ultra-efficient

Precise anatomic detail of varying densities is visualized, including bone, soft tissue such as lung and heart, and skin surfaces with an ultra-efficient CMOS flat detector. See what you’ve been missing with uncompromised full resolution and full frame rate imaging processing with the OEC Elite CFD. No longer see the effects of image lag, ghosting, and distortion, as CMOS detectors eliminate these factors resulting in superb image quality.

## Always optimizing

To ensure optimal image quality while minimizing dose during a procedure, OEC image processing continues to innovate with algorithms that automatically optimize settings resulting in less dose or mode adjustments.

- **Continuous fluoroscopy** optimizes image quality with uninterrupted imaging at low continuous mA for overall low dose.
- **Motion Tolerant Subtraction** enables a full leg Bolus Chase in one contrast run or quick identification of PICC lines in Preset Profiles.
- **Live Zoom** enables up to 4X zoom of live Fluoro or Cine, with no change in dose or need for higher dose Mag Mode.
- **eNR** presents 30% noise reduction during Vascular and Cardiac imaging, for equivalent appearance of 30 kW power, with no increase in dose or technique.



Bolus Chase



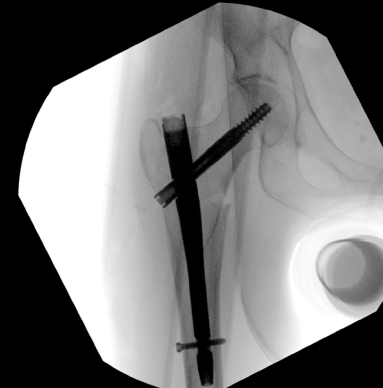
Distal Femoral Angiogram



Lateral Total Knee Replacement



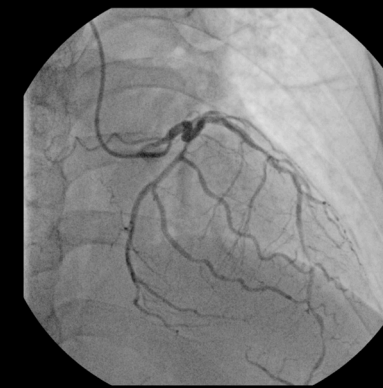
AAA - Angio



AP Hip Fracture



Barium Swallow



Cardiac Angiogram



Retrograde Pyelogram Kidney



AP Femur



Lateral Spine



AP Shoulder



Cervical Pain Management

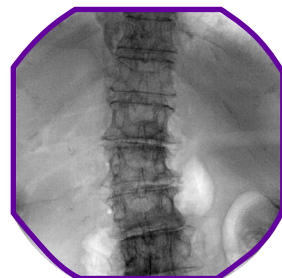
# Great views

## More anatomy

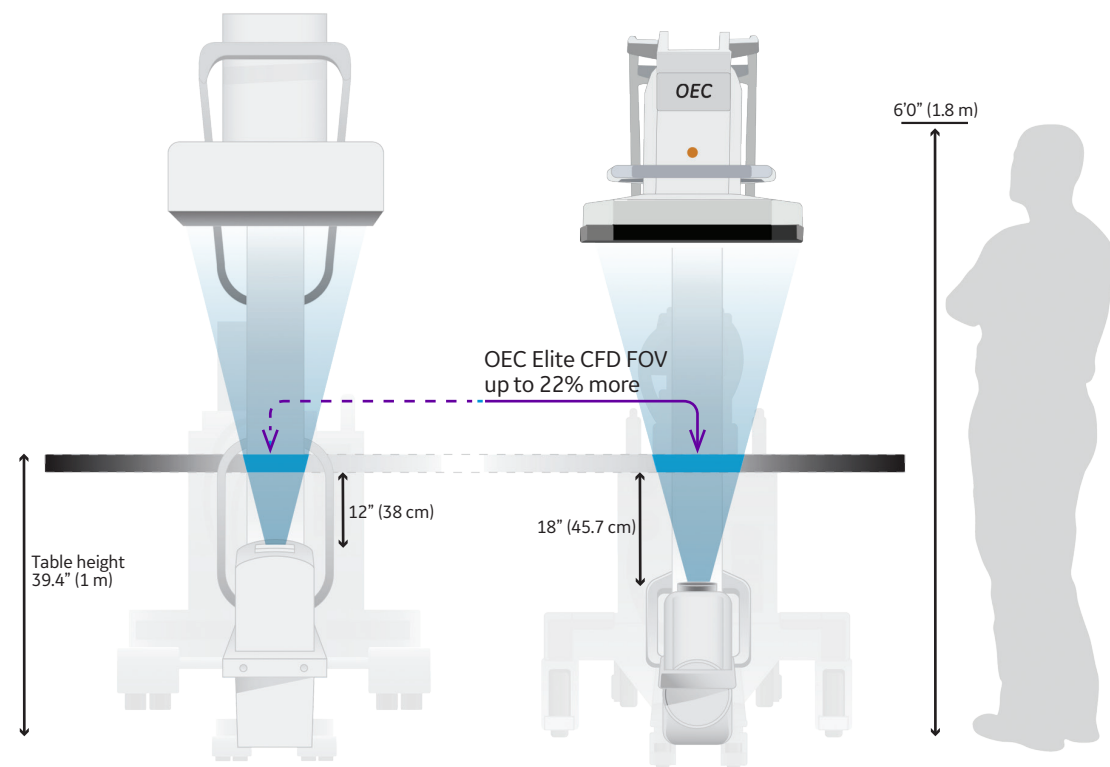
Achieve 22% larger anatomical Field of View, as the OEC Elite CFD design enables the detector to be placed closer to the patient, compared to other C-arms with larger housings. Also, less dose is required to achieve an image when a detector is closer to the patient anatomy.



Mono-block System Image



OEC Elite CFD Image



### Laterally low

Low by design, OEC Elite CFD C-arms make positioning for lateral and oblique shots easy.

Less table height adjustments are needed with the low lateral heights achievable on OEC Elite CFD C-arms. The small X-ray tube housing also enables easier positioning around various surgical tables.

### Within reach

With a lightweight feel, maneuvering the OEC Elite CFD seems effortless with radial dial brakes, full-length C-arm handles, and 30% less force needed to steer compared to OEC 9900 C-arms.

Users appreciate all the features that make a big difference when positioning OEC Elite CFD C-arms.

### Close view

View large 13.6" images on the 4K ultra-high-definition display. Images can also be shown on in-room or overhead displays via cable or wireless option.

Images appear 60% larger when display is extended 27" toward surgeon and can be aligned to surgeon's view with lower, higher, swivel or tilt positioning.

# Operate confidently

## Convenient control

Designed by users for intuitive imaging, the OEC Touch control panel presents a live image that mirrors the surgeon's display view for enhanced communications when changing or annotating images.

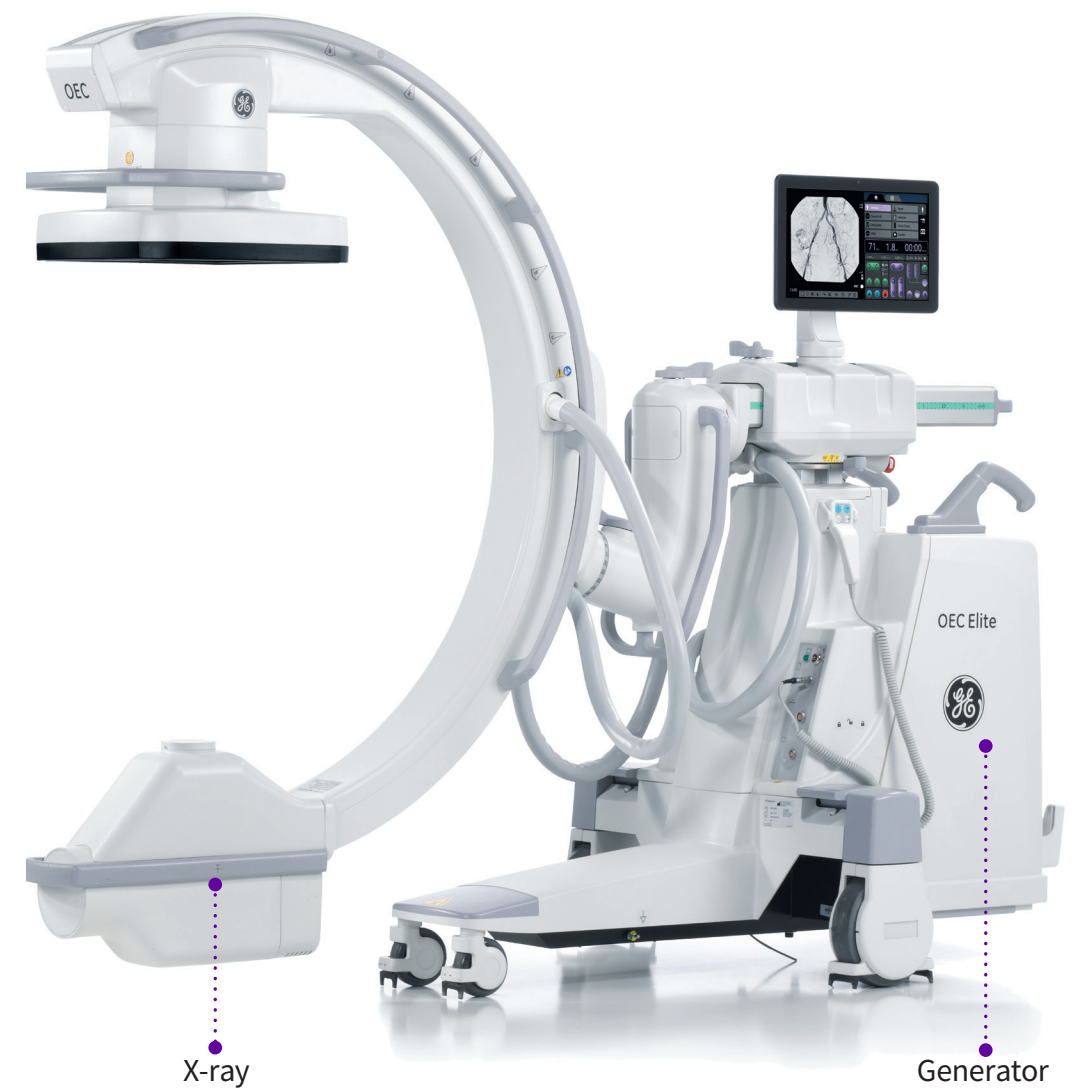
Bring controls within reach with the OEC Touch on a rollstand (optional). Users will find the recognizable OEC icons, colors, and layout quick to learn for image adjustments, changing profiles or recalling images during a procedure.



## Stay cool

OEC Elite CFD stays cool during long or complex cases ensuring fluoroscopy is available without interruption or degradation of imaging. With advanced air cooling and X-ray generation designs, the OEC Elite CFD dissipates heat and cools efficiently for performance when needed.

The Live Zoom feature enables a Fluoro or Cine to be increased up to 4X, thus avoiding the increased dose and heat build-up of Mag Mode.



# Optimal performance



## Dose matters

The OEC Elite CFD offers six modes of dose control that can be used alone or in combination. Using these modes will affect image quality while providing flexibility during a procedure. For example, during urological stone removal procedure, uninterrupted imaging may be desired. When low-dose mode is selected with standard fluoroscopic acquisition, a greater than 50% reduction dose rate can be achieved. Combine low dose with pulse mode and dose rate can be reduced by almost 90%.

## More choice

Managing X-ray exposure to patients and clinicians is vitally important, while ensuring optimal image quality is achieved. OEC Elite CFD enables users to:

- Live Zoom to 4X without increasing dose
- Select Pediatric Profile to automatically reduce dose by 50%
- Position detector with integrated green laser aimer with on/off on OEC Touch or detector
- Remove anti-scatter grid from detector easily with no tools
- Step back to minimize clinical exposure with handswitch and footswitch X-ray controls
- Optimize image quality at low dose with a CMOS detector

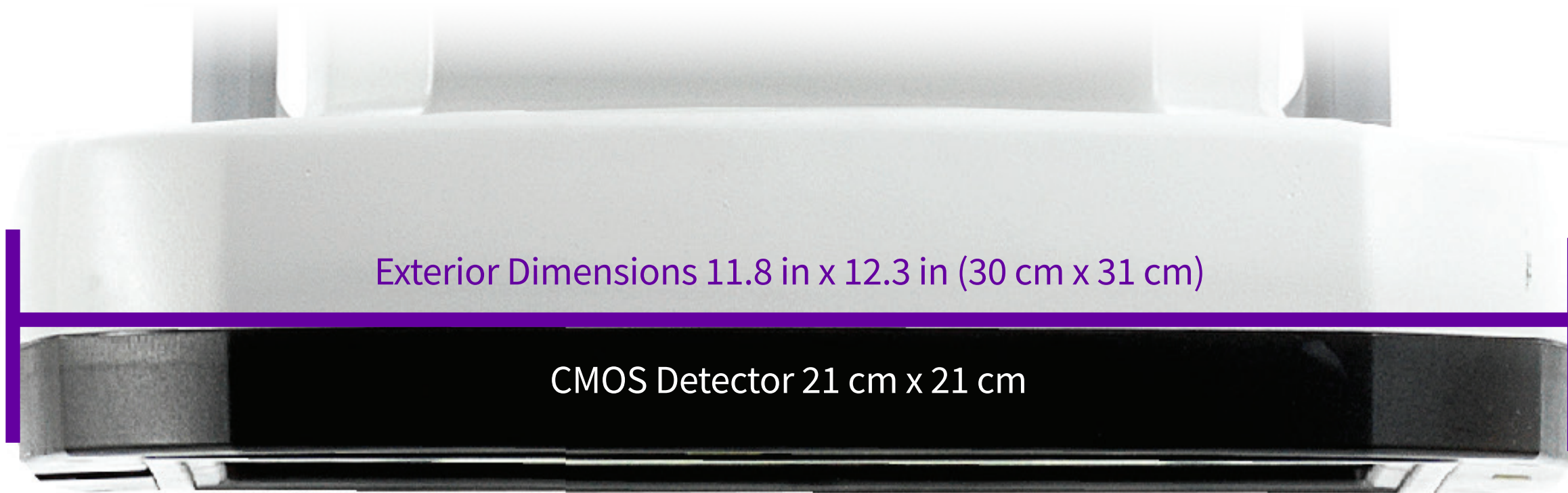
## Substantial security

Protecting Patient Health Information (PHI) is critical, and concerns about cyber security continue to increase. To address these concerns, the OEC Elite CFD provides data encryption at rest, runs on a Linux-based operating system which is less prone to malware or virus attacks, and enables users to set password requirements and manage system user access.

## Extensive connectivity

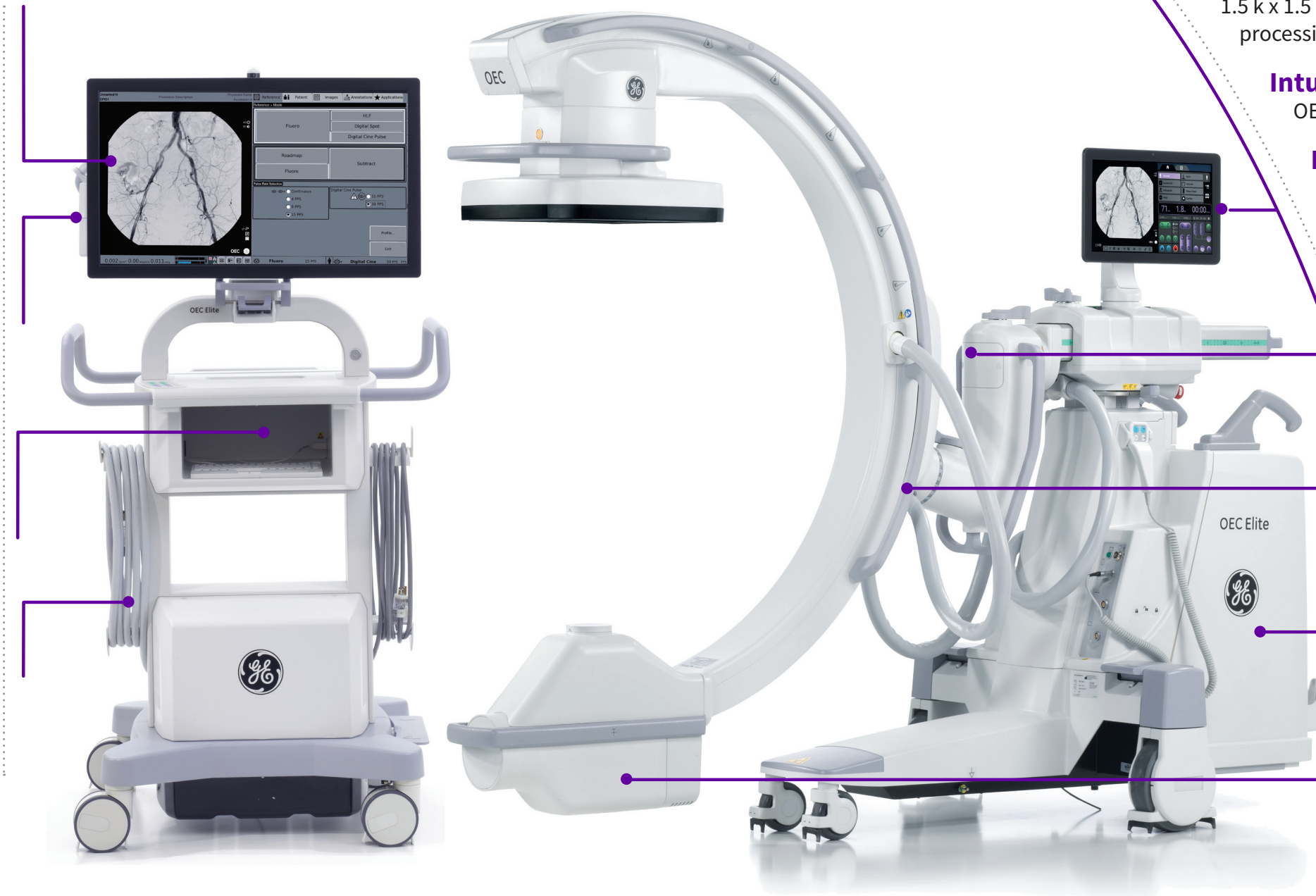
The OEC Elite CFD provides networking and connectivity access to export images for display or storage. For viewing convenience, OEC Elite CFD images can be displayed on additional in room monitors via DisplayPorts or wireless with the Live Cast option. For patient data management, images and dose reports can be exported to external storage devices via USB port or transferred via DICOM.

# Sleek design



# OEC Elite CFD

- View**  
13.6" image on 4K UHD 32" display
- Modern**  
Live Zoom, Digital Pen, eNR, and more
- Position**  
Surgeon line of sight with 360° positioning and 27" forward extension
- Fast**  
Quick startup and intuitive OEC user interface
- Display**  
Images on in-room displays via DisplayPort or Live Cast wireless option
- Squircle**  
Preserves 100% of image even when rotated
- Maneuverable**  
Lightweight slim design workstation
- Convenient**  
Storage shelf for printers or accessories
- Productive**  
Disconnect and reconnect C-arm without rebooting
- Secure**  
Linux-based operating system



**Detect**  
21 cm x 21 cm or 31 cm x 31 cm  
CMOS flat panel

**Smooth**  
True continuous fluoroscopy

**Clear**  
1.5 k x 1.5 k x 16 bit image  
processing at 30 fps

**Intuitive**  
OEC Touch control panel

**Precise**  
Integrated green laser aimer

**Dose Conscious**  
Finger removable  
anti-scatter grid

**SmartView**  
Lateral view articulating  
pivot joint

**Ergonomic**  
Color-coded radial dial  
brakes and long C-arm  
handles

**Agile**  
30% less force\* to  
steer

**Cool**  
Advanced cooling  
technology

**FOV**  
Low profile X-ray  
tube

**Choice**  
Ergo, Super and  
Motorized

\* Compared to OEC 9900 C-arms

Availability of select models, configurations, and options varies by country.  
Please contact your local sales representative.

**OEC Elite CFD performs for a variety of clinical applications**

Orthopedic • Spine • General Surgery • Urology • Pain Management • Vascular • Cardiac



Availability of select models, configurations, and options varies by country.  
Please contact your local sales representative.

GE HealthCare reserves the right to make changes in specifications and features shown herein, or discontinue the product described at any time without notice or obligation. Contact your GE HealthCare representative for the most current information. GE OEC Medical Systems, Inc., going to market as GE HealthCare. OEC is a trademark of GE HealthCare. GE is a trademark of General Electric Company used under trademark license. ©2023 GE HealthCare. All rights reserved.

JB11483XX