



GE HealthCare



# SIGNA Hero 3.0T

This one's for you

# Table of contents

## Power

Introducing SIGNA™ Hero 3  
What makes SIGNA Hero a hero? 4  
SIGNA Hero can offer all that and more 5

## Adaptive

An enhanced experience 6

## Intelligence

Exceptional image quality 7

## Streamlined

Unmatched productivity 8

## Future

Committed to sustainability 9

## Clinical gallery

Exceptional results every time 10



3  
4  
5  
6  
7  
8  
9  
10



Power

## Introducing SIGNA Hero

SIGNA Hero is a 70 cm bore, 3.0T scanner built to streamline workflow and increase productivity, and patient comfort. Combining exceptional image quality with an enhanced experience for both departments and patients—you can rely on this MR hero to make difficult exams routine, helping your daily practice run smoother.

# What makes SIGNA Hero a hero?



## Radiology teams

You are healthcare's hidden heroes and with increasing demands, you face more pressure than ever.



## Patients

They want the smoothest, most comfortable scan experience while spending as little time on the table as possible.



## Radiologists and referring physicians

They want the reassurance of accurate, fast, and reliable results.

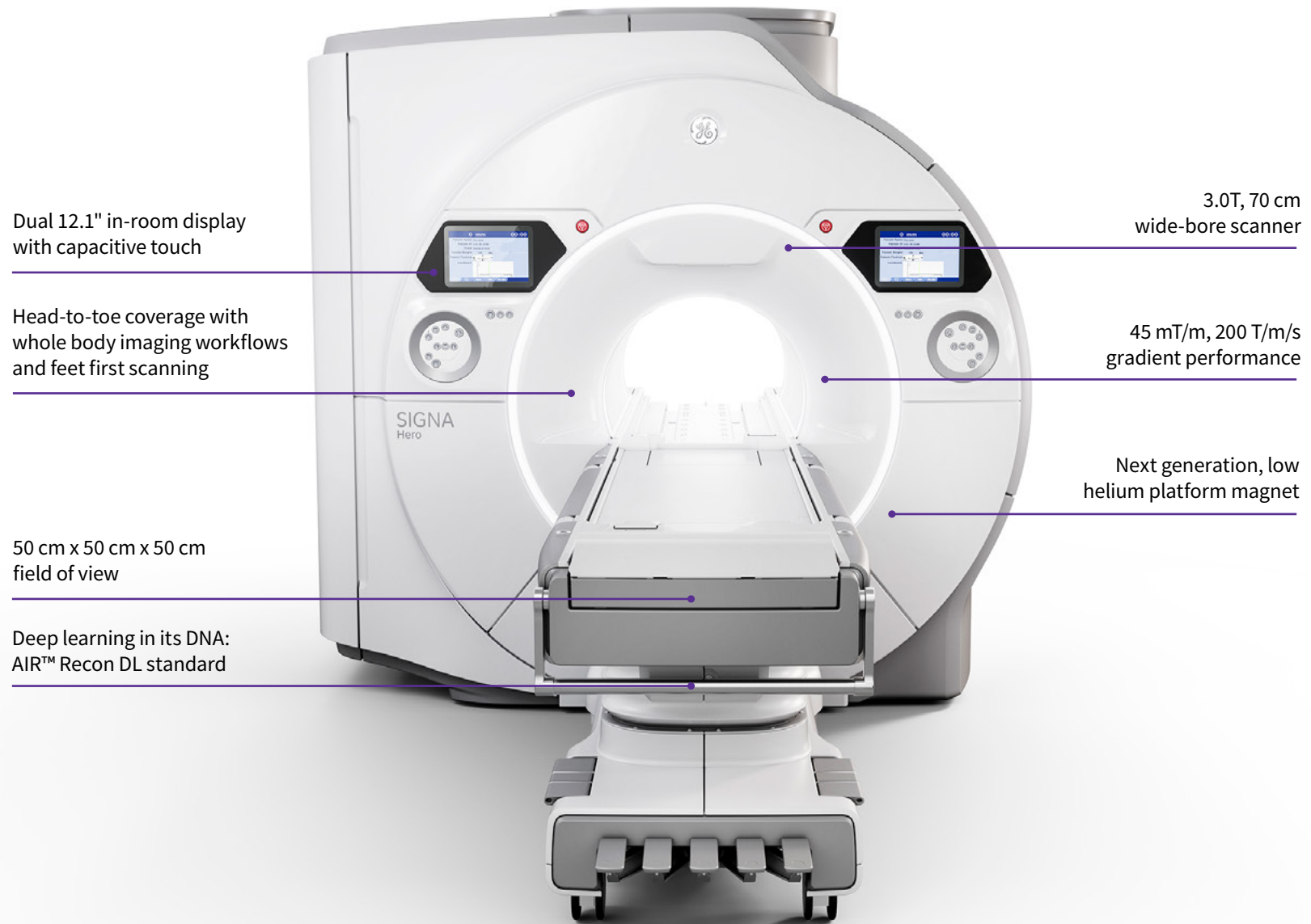


## Your staff

They want to help as many patients as possible with a scanner that makes their job and workload easier to manage.

# SIGNA Hero can offer all that and more

It's been built for anything: to improve patient experience, reduce clinician burden, and make difficult exams simpler. Helping true radiology heroes, just like you, do exactly what they need to do.



Dual 12.1" in-room display with capacitive touch

Head-to-toe coverage with whole body imaging workflows and feet first scanning

50 cm x 50 cm x 50 cm field of view

Deep learning in its DNA: AIR™ Recon DL standard

3.0T, 70 cm wide-bore scanner

45 mT/m, 200 T/m/s gradient performance

Next generation, low helium platform magnet

## Adaptive

# An enhanced experience for you and your patients

SIGNA Hero improves the scanning experience for both you and your patients. Our deep-learning reconstruction algorithm AIR Recon DL and automated applications such as AIR x™ and AIR Touch™ ensure scans can be completed faster, so patients spend less time on the table, reducing their anxiety and stress. For clinicians, faster scan times can help to reduce backlogs.

The eXpress Detachable Table accommodates patients of all sizes and can be set up in a separate room when patients are waiting for their scan, making workflow more efficient.

A wider 70 cm bore gives patients more room and when combined with unique blanket-like AIR Coils, scanning is less cumbersome. That means fewer adjustments, more clinical exams and no one gets turned away—so you can help even more patients.



## Scan faster

reduce backlogs with AIR Recon DL,  
AIR x and AIR Touch



## Improve efficiency

with our eXpress Detachable Table



## Reduce in-room patient coil adjustments

with AIR Coils and Whole Body  
Imaging workflows

## Intelligence

# Exceptional image quality with industry leading AI technology

Clearer images mean easier diagnoses, and with our pioneering deep-learning technology AIR Recon DL you can achieve exceptional images faster for even broader clinical coverage.

You can be more confident in the images you acquire with easy-to-read high quality scans that may also reduce eye fatigue, making scanning a better overall experience. Plus, scans can be completed up to 50% faster<sup>1</sup>, making it a more comfortable experience for your patients too.

Rely on the industry's latest AI technology. Invest today and be at the forefront of imaging innovation.



## Acquire

exceptional MR images faster  
with AIR Recon DL



## Increase

signal-to-noise ratio, and the  
sharpness and clarity of MR images



## Grow

with AIR Recon DL's  
future enhancements

Streamlined

# Unmatched productivity with the AIR family of technologies

**SIGNA Hero is designed to help streamline even the most challenging of clinical schedules.**

AIR Coils and AIR Recon DL enable you to carry out end-to-end clinical solutions in areas such as prostate cancer, as part of mainstream clinical practice. This comprehensive MR solution enables fast, consistent, and measurable results in 10 minutes while adhering to the PI-RADS® v2.1 criteria guidelines. The sharper imaging helps eliminate unnecessary biopsies, making prostate cancer evaluation more efficient.

In MR, long scan times mean imaging is compromised by the body's movement. Until now. Using deep learning, we have cut scan times from minutes to seconds, reducing motion artifacts and the need for rescans. Acceleration with Sonic DL™ equips your scanner with the ability to match the speed of the human body, enabling image acquisitions that were previously not possible.

Sonic DL slashes scan time by up to 83%<sup>2</sup> while maintaining diagnostic value. In the critical area of cardiac imaging, up to 12X acceleration means capturing rapidly moving anatomies like heart valves easily and accurately. Now you can reach the apex between swiftness and diagnostic quality with Sonic DL acceleration.



## Diagnose

confidently with end-to-end clinical solutions for vital exams



## Access

help from clinical radiology experts whenever you need it



## Streamline

protocols seamlessly and optimize staff training

## Future Committed to sustainability

### A cleaner way to scan your MR patients

At GE HealthCare MR, we're committed to a greener future and SIGNA Hero is at the forefront of that mission. With our intelligent magnet technology which is 1.4x more efficient than previous generations, the SIGNA Hero has 67% lower helium usage. Our magnets stay current for multiple product generations through the SIGNA Continuum and SIGNA Lift programs, so you're investing in the future.

With built-in sleep mode to conserve energy, and the ability to reduce power consumption through reduced scan time of up to 50%<sup>4</sup>—SIGNA Hero is a sustainable investment. The system can work around your current workspace as it can be installed in typical 1.5T rooms and upper floors due to the lighter magnet weight—three tons less than our mainstream 3.0T system.



**Choose**

a 1.4x more efficient magnet design, which means helium usage is reduced by 67%<sup>3</sup>



**Reduce**

your site construction costs with flexible equipment room design options



**Decrease**

power consumption through a reduced scan time of up to 50% with AIR Recon DL<sup>4</sup>

Clinical gallery

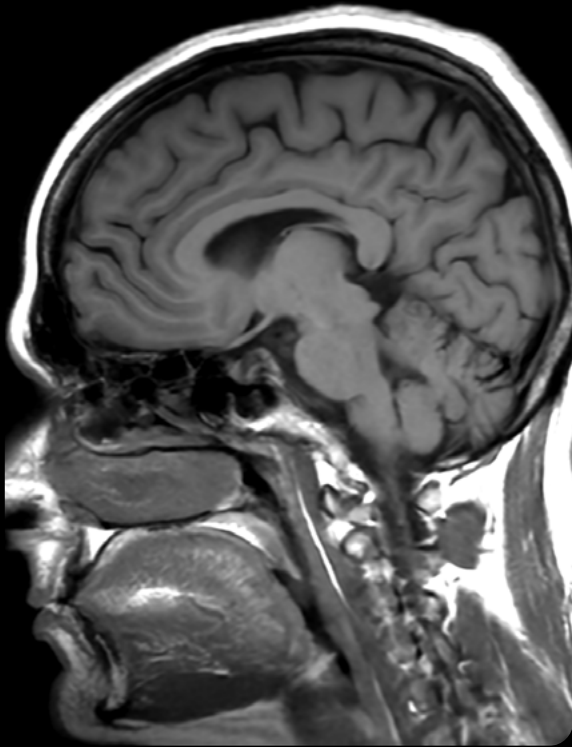
# Exceptional results every time

[→ View gallery](#)

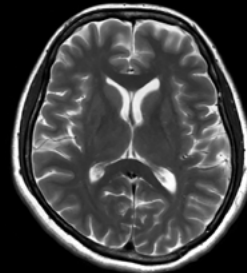


# Exceptional results every time

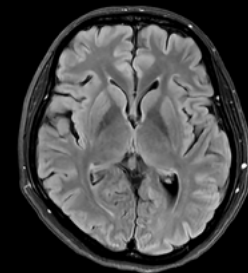
HyperSpeed Brain 4-minute exam



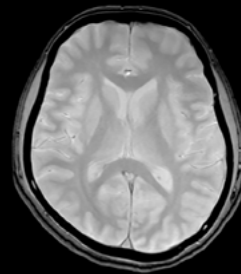
Sagittal T1 FLAIR  
0.9 x 1.1 x 5 mm  
52 sec



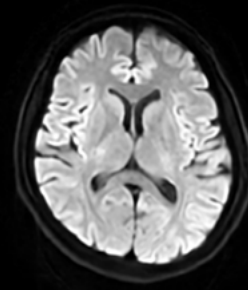
Axial T2 FSE  
0.5 x 1.0 x 5 mm  
37 sec



Axial T2 FLAIR  
0.9 x 1.2 x 5 mm  
1:21 min



Axial T2\* GRE  
0.8 x 1.5 x 5 mm  
34 sec



Axial DWI b1000  
1.9 x 2.0 x 5 mm  
26 sec



# Exceptional results every time

Spine imaging



Lumbar Spine  
Sagittal T2 FSE  
0.7 x 0.8 x 3 mm  
1:49 min



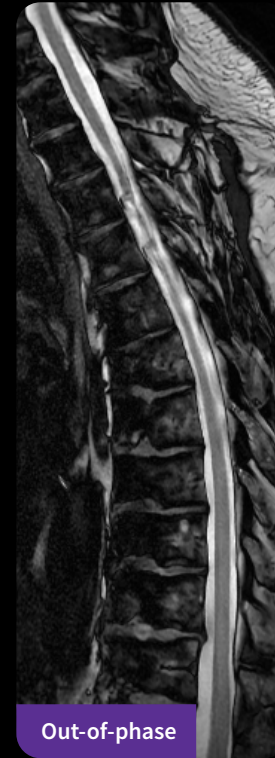
Water



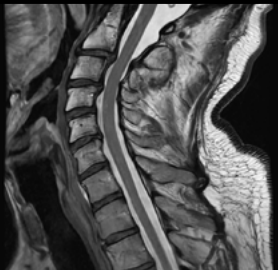
Fat



In-phase



Out-of-phase



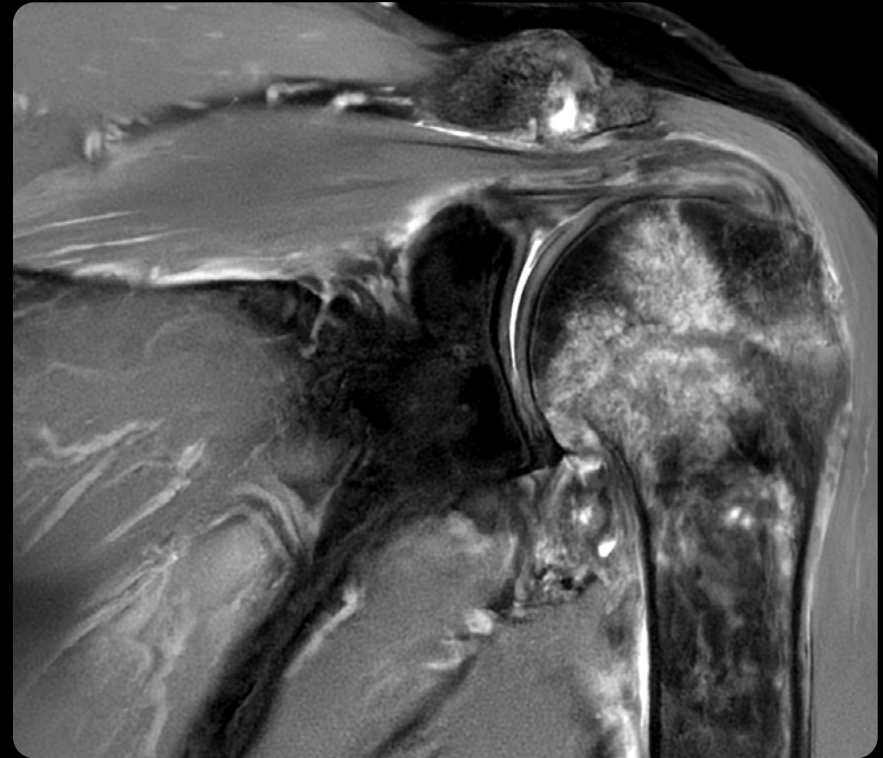
Cervical Spine  
Sagittal T2 FSE  
0.6 x 0.8 x 3 mm  
2:15 min

Thoracic Spine  
Sagittal T2 FSE Flex  
0.6 x 0.9 x 3 mm  
3:41 min



# Exceptional results every time

Shoulder imaging



Shoulder

Axial and Coronal PD FSE FatSat Propeller

1.4 x 0.4 x 3 mm

3:19 min

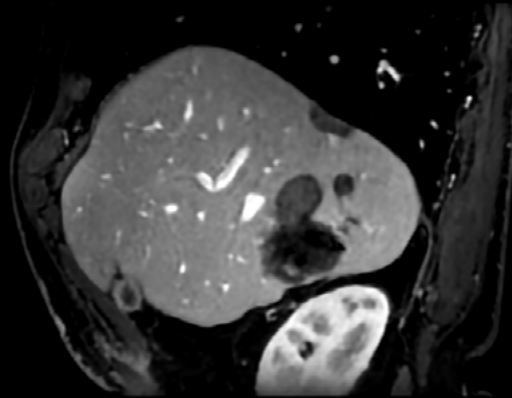


# Exceptional results every time

Abdominal imaging



Liver  
Axial LAVA  
1.6 x 1.6 x 1.7 mm  
18 sec



Sagittal Reformat

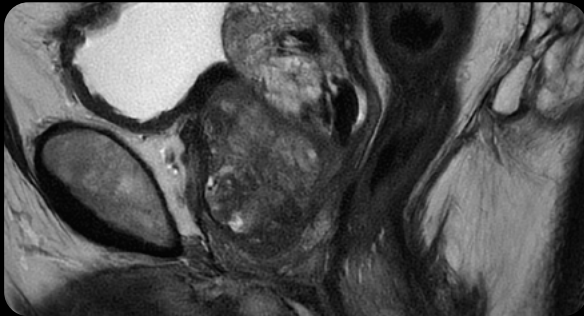


Coronal Reformat

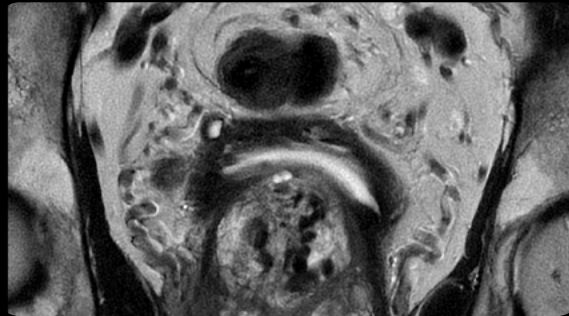


# Exceptional results every time

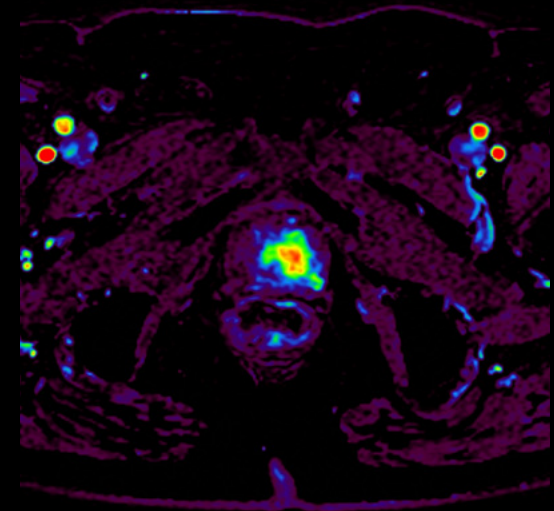
Prostate



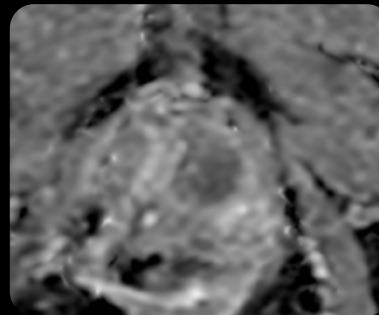
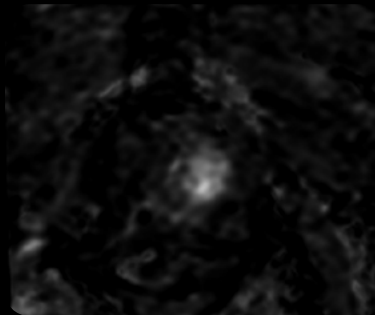
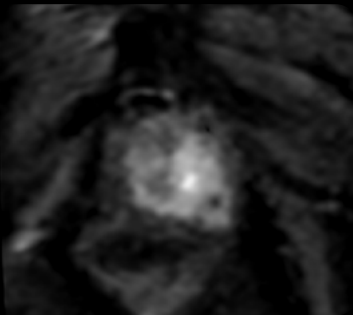
Axial T2 PROPELLER  
0.5 x 0.5 x 3 mm  
4:42 min



Sagittal T2 PROPELLER  
0.5 x 0.5 x 3 mm  
2:22 min



Dynamic DISCO LAVA, Max Slope of Increase  
1.1 x 1.3 x 3 mm  
4:27 min

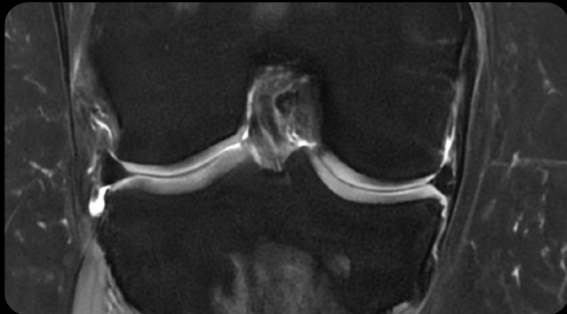


FOCUS DWI b800, MAGiC DWI b2000 and ADC map  
0.7 x 2.4 x 3 mm  
4:24 min



# Exceptional results every time

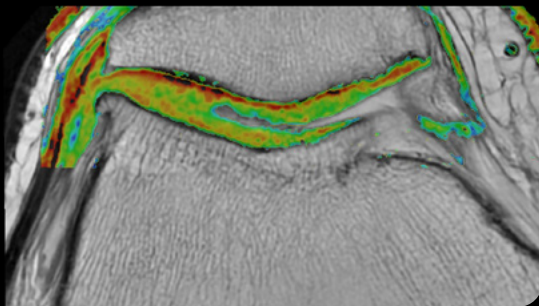
Knee imaging



Coronal PD FSE FatSat PROPELLER

1.4 x 0.4 x 3 mm

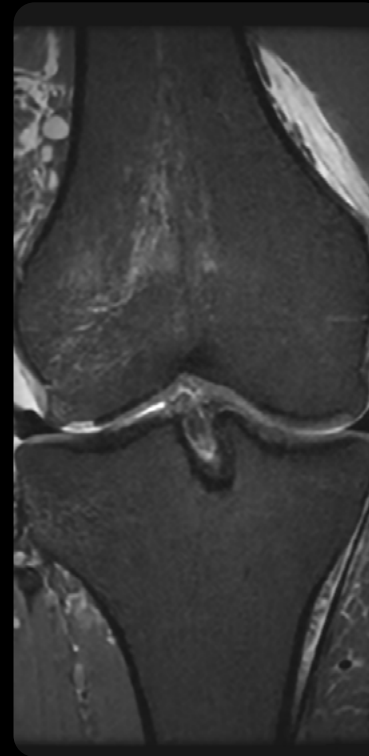
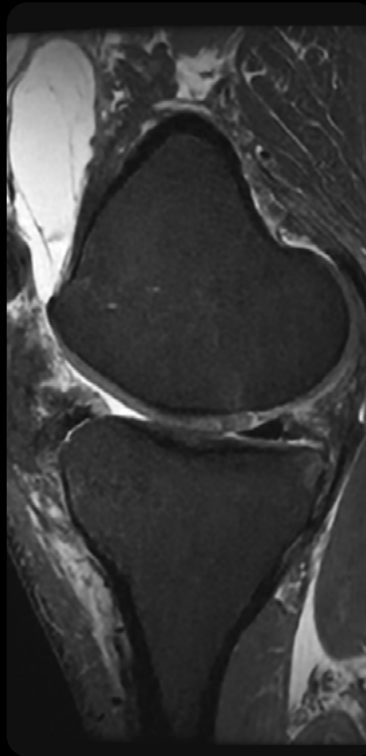
2:11 min



Axial Cartigram T2 Mapping

1.4 x 0.4 x 2.6 mm

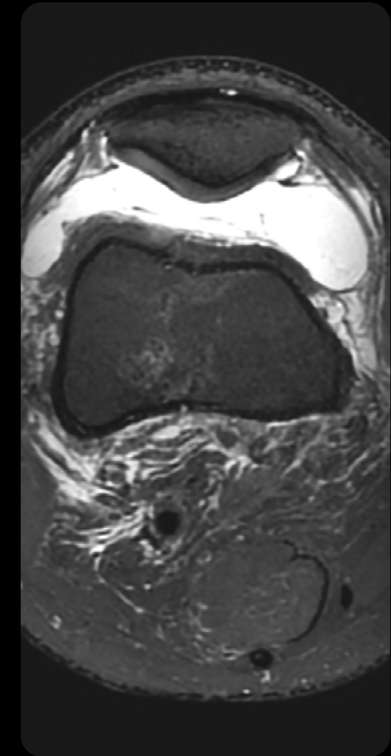
3:48 min



Sagittal PD FatSat Cube

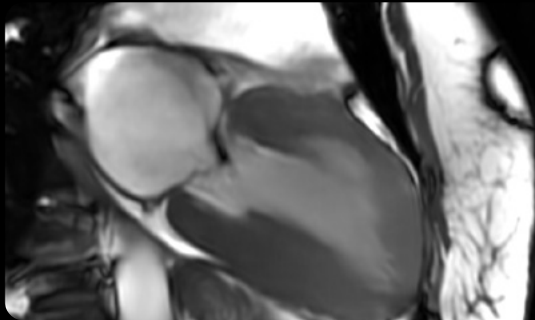
1.7 x 0.7 x 0.7 mm

5:15 min

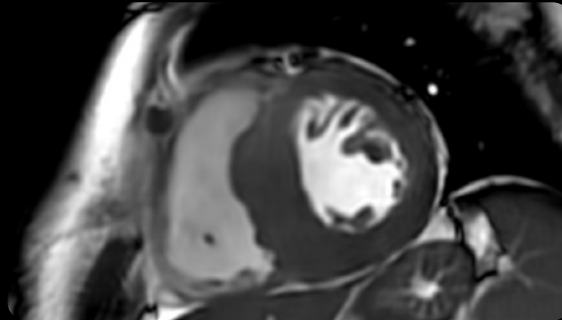


# Exceptional results every time

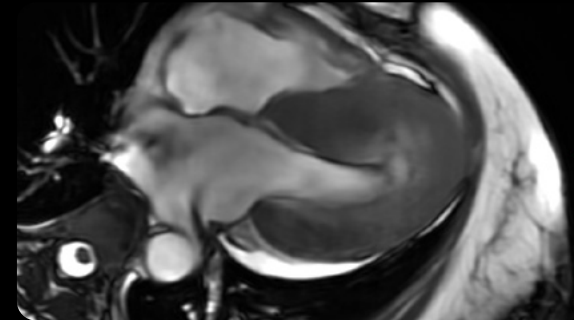
Cardiac imaging



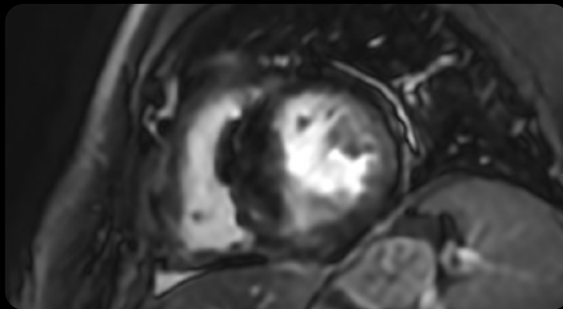
Two chamber | Breath-hold | Sonic DL Fiesta Cine  
1.6 x 1.6 x 8 mm  
3 locations, 23 sec total



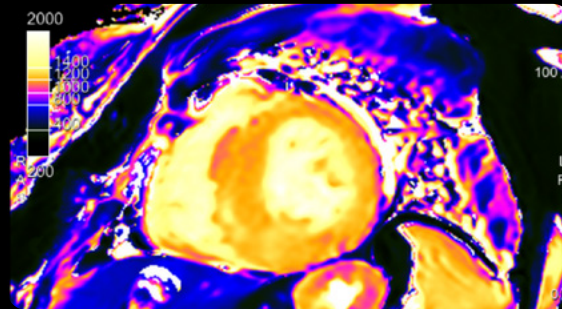
Short Axis | Breath-hold | Sonic DL Fiesta Cine  
1.6 x 1.6 x 8 mm  
14 locations, 1:05 min total



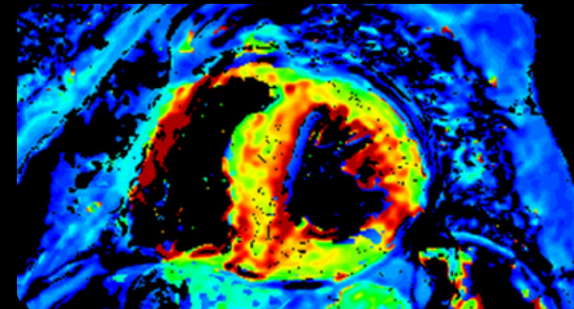
Four chamber | Breath-hold | Sonic DL Fiesta Cine  
1.6 x 1.6 x 8 mm  
3 locations, 23 sec total



Short Axis PSMDE  
2.9 x 2.9 x 8 mm  
45 sec



T1 Mapping (T1 Native and ECV Map)  
2.4 x 2.9 x 8 mm  
30 sec





# SIGNA Hero

## Summary

### An enhanced experience

for both patients and clinicians—improve efficiency, comfort and workflow

### Exceptional image quality

achieve sharper scans with our pioneering deep-learning AI algorithms workflow

### Unmatched productivity

streamline even the most challenging of clinical schedules

### Committed to sustainability

choose a cleaner way to scan your MR patients

SIGNA Hero is built for any challenge 

If you're interested in learning more  
please contact a representative  
for a product demo.

## About GE HealthCare Technologies Inc.

GE HealthCare is a leading global medical technology, pharmaceutical diagnostics, and digital solutions innovator, dedicated to providing integrated solutions, services, and data analytics to make hospitals more efficient, clinicians more effective, therapies more precise, and patients healthier and happier. Serving patients and providers for more than 125 years, GE HealthCare is advancing personalized, connected, and compassionate care, while simplifying the patient's journey across the care pathway. Together our Imaging, Ultrasound, Patient Care Solutions, and Pharmaceutical Diagnostics businesses help improve patient care from diagnosis, to therapy, to monitoring. We are an \$19.6 billion business with approximately 51,000 colleagues working to create a world where healthcare has no limits.

Follow us on [LinkedIn](#), [X](#) (formerly Twitter), and [Insights](#) for the latest news, or visit our website [gehealthcare.com](https://www.gehealthcare.com) for more information.