

TOMORROW TODAY

SIGNA™ Voyager

Premier Edition

gehealthcare.com/mr





Exceptional imaging in a compact, high-efficiency scanner

SIGNA™ Voyager Premier Edition gives technologists and radiologists quick, patient-friendly exams with consistent, optimal image quality. Administrators love the rapid return on investment (ROI) this scanner can deliver, with the potential to save up to \$100,000 over 10 years with up to 46% less power consumption*.

Whether your interest is efficiency, image quality or cost-efficiency, this intelligent 1.5T wide bore scanner delivers. It's designed to be a masterful balance of comfort and productivity, with features that improve the patient experience and software that can optimize image quality and reduce exam time. And for hospitals looking for the flexibility of a dockable table, SIGNA™ Voyager Premier Edition also offers the eXpress Patient Table option. It's built for improved patient handling, maneuverability and durability.

* Compared to conventional 1.5T wide bore designs





AIR™: A simply better MR experience

Reduce prep time, exam time and table time without compromising image quality.

When you combine the SIGNA™ Voyager's versatility with the AIR™ family of technologies, which includes an award-winning coil design, intelligent productivity applications and pioneering reconstruction software, you can change the way you work. For example, if a patient condition requires feet-first imaging for a brain-spine exam, it's possible with SIGNA™ Voyager Premier Edition. And that's just the beginning.



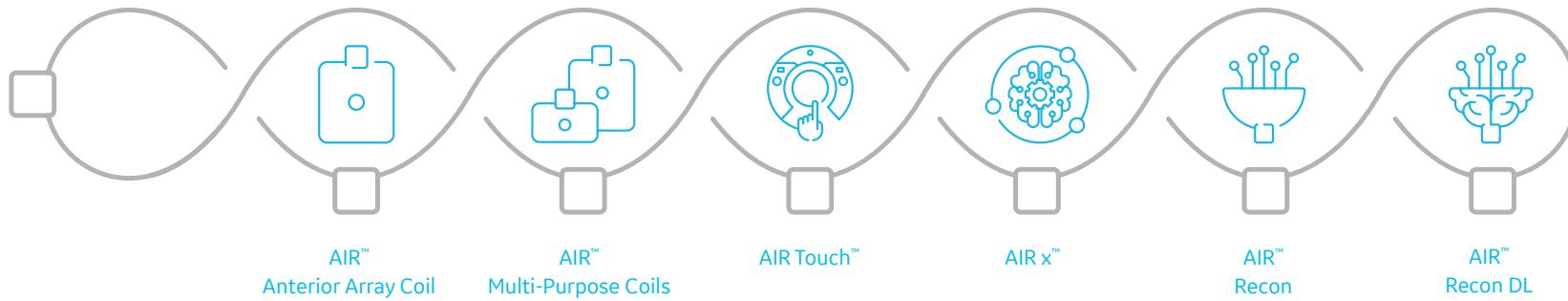
AIR™ Coils

Clinical versatility and comfort

Awarded Best New Radiology Device of 2019 by AuntMinne.com, AIR™ Coils are the foundation of a simply better MR experience. The breakthrough coil design is lighter, offers more versatility and provides greater coverage, laying the groundwork for greater positioning freedom and a comfortable patient experience.

- **AIR™ Anterior Array Coil** - Scan the chest, abdomen and pelvis without repositioning the coil.
- **AIR™ Multi-Purpose Coils** - Easy ortho, body and cardiac scans with medium and large sizes.





AIR™ Workflow

Intelligent productivity improvements

Enhance your productivity with intelligent workflow applications developed to optimize your scans. AIR™ Workflow helps you accelerate scan times, increase diagnostic confidence across skill levels and consistently deliver accurate results. Our automated applications make a clinically impactful difference for a simply better workflow.

- **AIR Touch™** – Smart coil selection that automatically knows the best combination for every patient. With AIR Touch™, you simply use IntelliTouch™, GE's 1-touch landmarking tool, to activate an optimized set of coils that is selected based on the patient's anatomy and desired field-of-view.
- **AIR x™** – Using a deep-learning algorithm based on over 36,000 brain and 200,000 knee images, AIR x™ automatically prescribes slices to drive consistent and reproducible slice placement. No matter who is scanning, you get the right slice every time regardless of the patient's age, pathology or position in the magnet.



AIR™ Image Quality

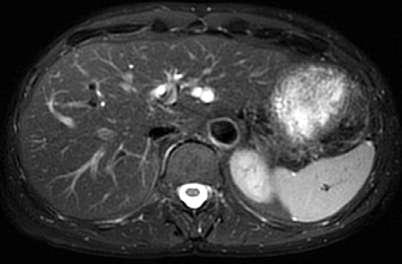
Consistently superior image quality

AIR™ Image Quality expands the AIR™ family of technologies with new and innovative image reconstruction software that increases SNR, reduces background noise and artifacts, and sharpens images, leading to significantly reduced scan times.

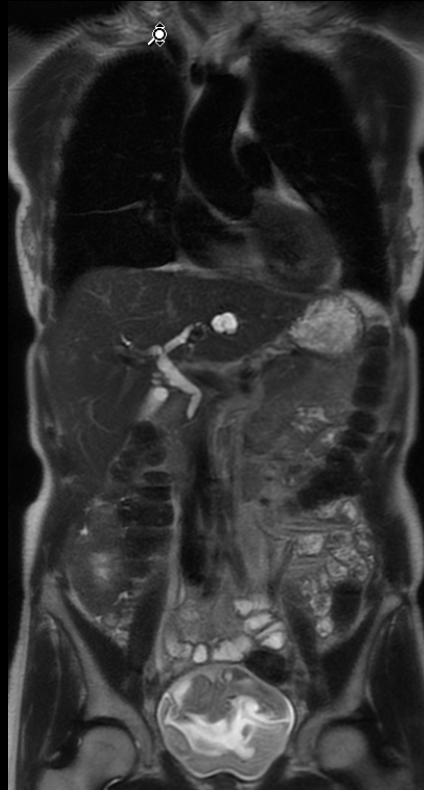
- **AIR™ Recon** – GE's smart reconstruction algorithm, AIR™ Recon, uses data acquired during prescan and then weights the receive channels according to their noise level. This means you automatically get cleaner, crisper images without having to overcompensate in your scanning protocol on every scan as a standard feature.
- **AIR™ Recon DL** – The advanced option of AIR™ Recon that it uses a deep-learning-based reconstruction algorithm that improves SNR and image sharpness with Intelligent True Resolution, enabling shorter scan times. It improves image quality at the foundational level by making use of raw data to remove image noise and ringing. With the ability to set your preferred SNR improvement level at low, medium or high, you can acquire higher SNR without a time penalty and get images virtually free of artifact.

AIR™ Anterior Array Coil

Industry-leading flexibility allows you to scan the chest, abdomen and pelvis without repositioning the coil.



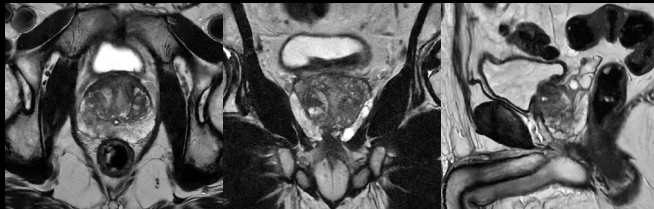
T2 PROPELLER FatSat RT
1.1 x 1.1 x 5 mm, 4:00 min.



2-station T2 Single Shot
1.1 x 1.4 x 5 mm
0:28 sec.



Coronal T2 HyperCube STIR with HyperSense
1.3 x 1.3 x 1.6 mm
16ch AIR AA + 32ch PA + 21ch HNU



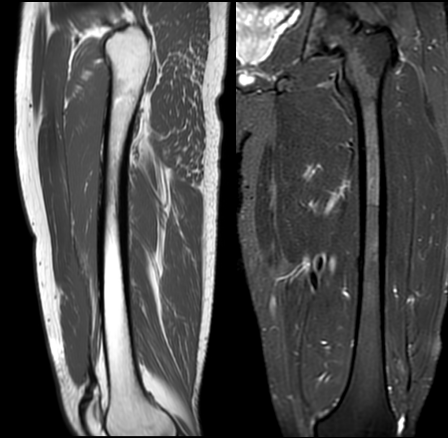
Axial T2
0.4 x 0.7 x 3.0 mm
3:10 min./22 slices

Coronal T2
0.6 x 0.7 x 3.0 mm
1:18 min./ 22 slices

Sagittal T2
0.8 x 1.0 x 3.0 mm
0:58 sec./ 22 slices

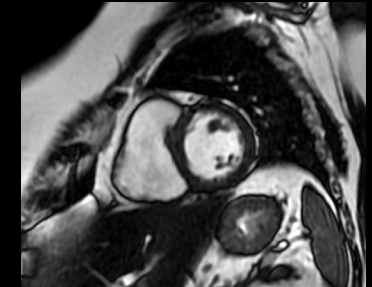
AIR™ Multi-Purpose Coils

Easily perform ortho, body and cardiac scans with medium and large sizes.



Sagittal T1
FOV 40 cm

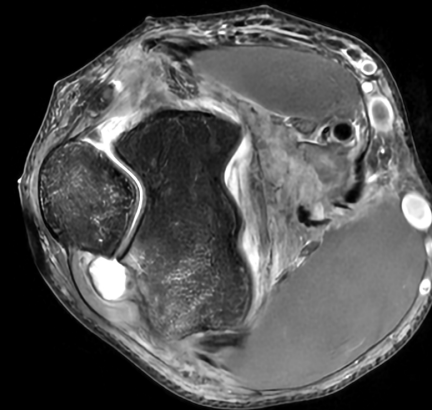
Coronal STIR
FOV 40 cm



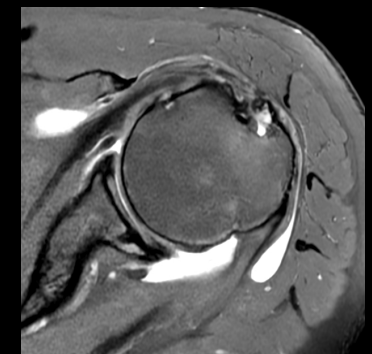
Short Axis Cine FIESTA
2.3 x 1.9 x 8 mm



Sagittal T1
0.4 x 0.5 x 2.5 mm



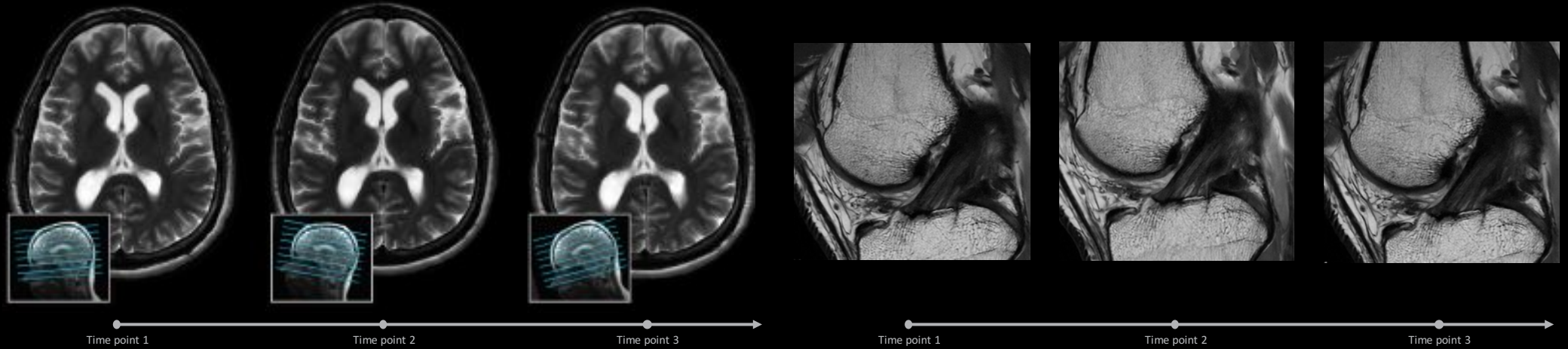
Axial PD FatSat
0.4 x 0.4 x 3.0 mm



Axial PD FatSat
0.3 x 0.5 x 3.0 mm

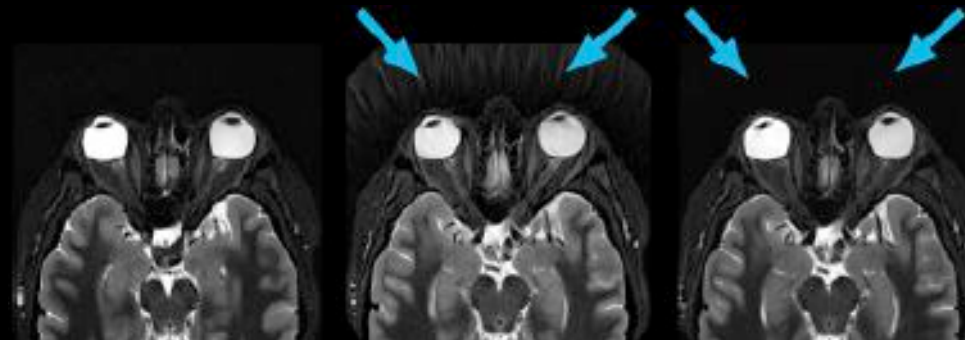
AIR x™

Intelligent MR slice prescription, available for both brain and knee. Studies have shown 5x faster set-up time and 4x fewer clicks with AIR x™, so technologists can zip through set up and ease through exams.



AIR™ Recon

Providing exceptional image quality and faster scan times, AIR™ Recon is seamless to use and always on. It's available on the majority of routine clinical scans and several key applications such as PROPELLER, Cube, FSE and Flex.



Before
Axial T2 STIR PROPELLER
0.5 x 0.5 x 2.5 mm
4:33 min
1.7 No Phase Wrap

Before
Axial T2 STIR PROPELLER
0.5 x 0.5 x 2.5 mm
3:33 min
1.3 No Phase Wrap

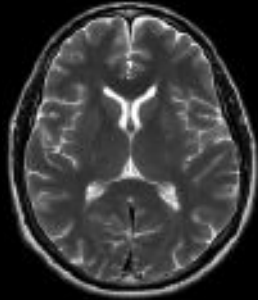
**Using SIGNA™ Works
AIR™ IQ Edition**
Axial T2 STIR PROPELLER
0.5 x 0.5 x 2.5 mm
3:33 min
1.3 No Phase Wrap with
AIR™ Recon

AIR™ Recon DL

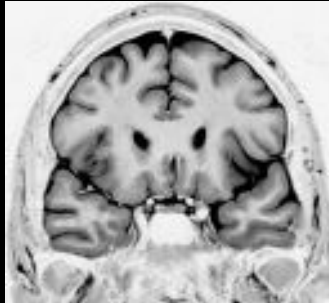
With AIR™ Recon DL, radiologists can have higher consistency and quality in the images they interpret. And technologists can acquire higher SNR without a time penalty. Scan time may also be reduced without compromising detail or SNR.



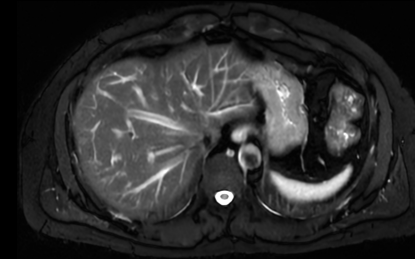
AIR™ Recon DL for Speed
Sagittal T1 FLAIR
0.8 x 1.2 x 5.0 mm
0:31 sec./23 slices



AIR™ Recon DL for Speed
Axial T2
0.8 x 1.2 x 5.0 mm
0:22 sec./24 slices



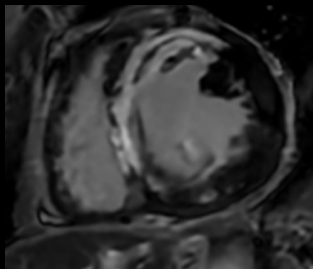
AIR™ Recon DL
Coronal STIR temporal lobes (inverted)
0.8 x 0.9 x 3.0 mm
0:52 sec./22 slices



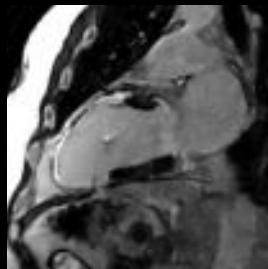
AIR™ Recon DL
Axial T2 SSFSE ASPIR
SnapShot Navigated
1.3 x 1.7 x 5.0 mm
1:13 min./35 slices



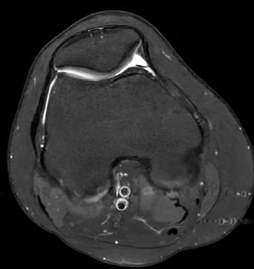
AIR™ Recon DL
Sagittal DWI FOCUS b800
1.5 x 3.7 x 2.3 mm
3:27 min./21 slices



AIR™ Recon DL
Short Axis Single Shot MDE
Free Breathing
1.6 x 1.9 x 8.0 mm
0:09 sec.



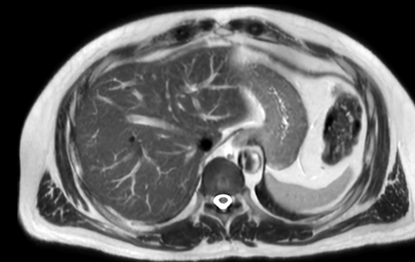
AIR™ Recon DL
2ch Long Axis 2D MDE
1.8 x 2 x 8 mm



AIR™ Recon DL
Axial PD Fat Sat
0.4 x 0.6 x 3.0 mm
1:50 min.



AIR™ Recon DL
Coronal PD Fat Sat
0.4 x 0.6 x 3.0 mm
1:57 min.



AIR™ Recon DL
Axial T2 SSFSE
SnapShot Navigated
1.3 x 1.7 x 5.0 mm
0:57 sec./35 slices



Software that makes MR imaging intelligently efficient

SIGNA™Works Premier Edition, GE's latest software release, introduces simply better technologies and improvements to your MR scanner. Whether it's simplifying scan setup, accelerating image reconstruction or improving patient comfort, the addition of the AIR™ family of technologies to the SIGNA™Works platform packs innovations that deliver versatility, productivity and consistent quality to all users. SIGNA™Works AIR™ IQ Edition also includes new, advanced applications and enhancements to existing ones to solve your daily challenges and empower any technologist to deliver high quality images with remarkable clarity.

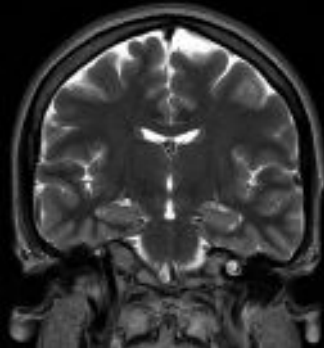
NeuroWorks

Image brain, spine and vascular anatomy with exceptional tissue contrast, motion robustness and quantification with these 2D and 3D applications. Use with features such as AIR™ Recon, AIR™ Recon DL and AIR x™ brain for reliable, consistent results from acquisition to post processing.

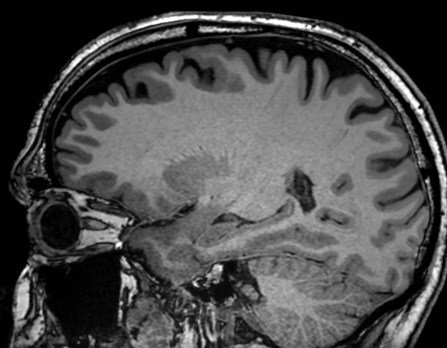
Cube, GE's 3D FSE-based sequence which allows for submillimeter volumetric scans, is now a key sequence for the brain and spine. In addition to T1, T2, PD, T2 FLAIR and Double IR (DIR white matter and gray matter) contrasts, Cube includes T1 FLAIR and STIR. You can pair Cube with HyperSense and HyperCube to reduce scan times and further drive productivity.



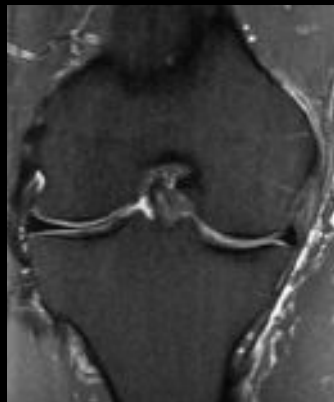
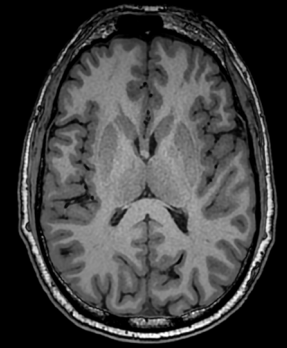
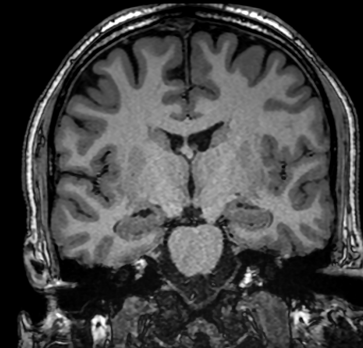
Sagittal T2 FLAIR Cube
1.1 x 1.1 x 1.4 mm
4:45 min.



Coronal T2 PROPELLER
0.5 x 0.5 x 4.0 mm
3:12 min.



Axial MP-RAGE
0.8 x 0.8 x 0.8 mm



Sagittal Cube PD FatSat
0.6 x 0.6 x 0.6 mm
5:08 min.



Sagittal PROPELLER
PD FatSat
0.5 x 0.5 x 2.2 mm
3:40 min.



Coronal PD FSE-Flex water image
0.5 x 0.7 x 3.0 mm
3:39 min.



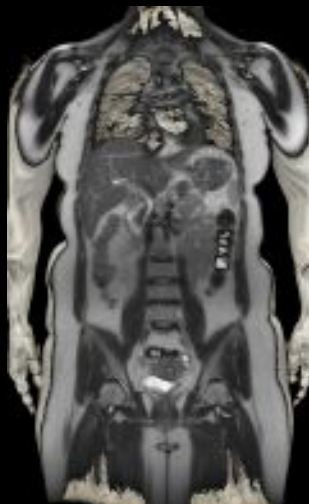
OrthoWorks

Image bone, joints, cartilage, meniscus and all soft tissues with remarkable tissue contrast with GE's extensive library of musculoskeletal imaging techniques. Use Cube with HyperSense for isotropic imaging, PROPELLER for motion-insensitive imaging of the shoulder, and FSE Flex for efficient and robust fat/water separation.

BodyWorks

Eliminate the variable of patient-breath holding and conquer timing challenges when conducting whole-body, abdominal and pelvic scans with our suite of simple, push button dynamic imaging applications that give you speed and the flexibility to adapt to different patient types and conditions.

The suite includes sensor-free motion correction and navigators that enable free-breathing exams with a broad range of contrast weighting like diffusion, SnapShot SSFSE, PROPELLER MB, MRCP and dynamic multi-phase T1 imaging.



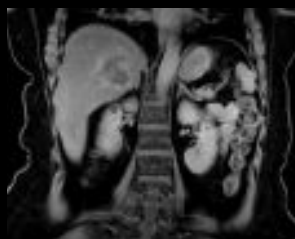
Coronal SSFSE
Whole body - 50 cm FOV, pased
0:15 sec. and 0:18 sec.



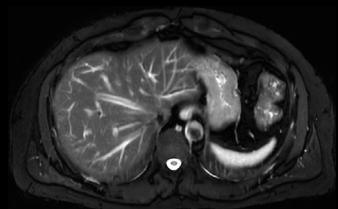
Axial LAVA-Flex Water Image
Breath Hold
1.0 x 1.8 x 3.4 mm
0:20 sec.



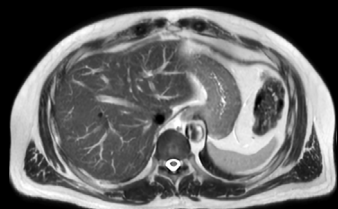
Axial LAVA Breath Hold
1.3 x 2.0 x 3.8 mm
0:17 sec.



Coronal LAVA Flex
with Auto Navigator
320 x 192
2.2 mm
1:04 min.



Axial T2 SSFSE ASPIR
SnapShot Navigated
1.3 x 1.7 x 5.0 mm
1:13 min./35 slices

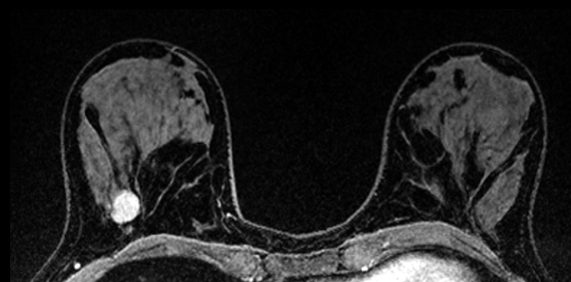


Axial T2 SSFSE
SnapShot Navigated
1.3 x 1.7 x 5.0 mm
0:57 sec./35 slices

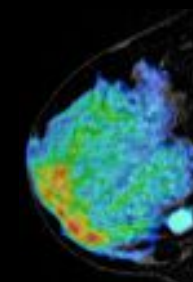
OncoWorks

This extensive library of techniques captures anatomic data to uniquely enable oncological assessment of the anatomy. OncoWorks includes diffusion techniques, robust tissue contrast and motion-insensitive, high temporal and spatial resolution imaging.

3D volumetric imaging with an optimized adiabatic fat suppression, combined with ARC or ASSET, provides high spatial and temporal resolution to capture contrast uptake patterns.



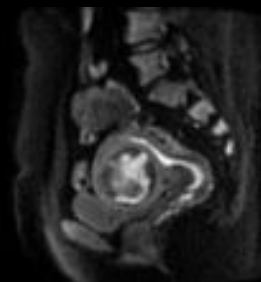
Axial DISCO Water Image and sagittal reformat
0.7 x 0.7 x 1.0 mm
1:01 min. per phase



Sagittal DISCO reformat fused
with sagittal DWI FOCUS



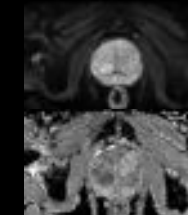
Axial T2 FSE
Ax T2 FSE w/ AIR™ Recon DL
0.4 x 0.7 x 3 mm
1:46 min.



Sagittal DWI MUSE b800
2.7 x 2.7 x 4 mm
3:20 min.



Sagittal 3D DISCO Dynamic
2.4 mm slices
12 phases, 11.6s/phase



FOCUS DWI
b50 / b800
4mm 100x50
4:23 min./26 slices

CVWorks

With these adaptable, intuitive cardiac techniques you can assess morphology, flow, function and tissue viability to gain crucial insights into vascular structure and flow dynamics on even the most difficult patients. Highlights include non-invasive vascular imaging solutions like Inhance suite and free-breathing localization with iDrive. Time course perfusion with motion correction provides qualitative improvements for first pass perfusion and multiple breath-hold imaging is eliminated with Single Shot MDE and Phase Sensitive MDE and Black Blood techniques.

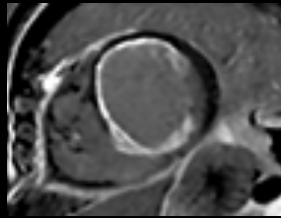
You can also complete whole body vasculature in less than 6 minutes with QuickStep protocols and visualize bright blood pool and myocardial tissue with FIESTA Cine.



Inhance 3D DeltaFlow
3 stations



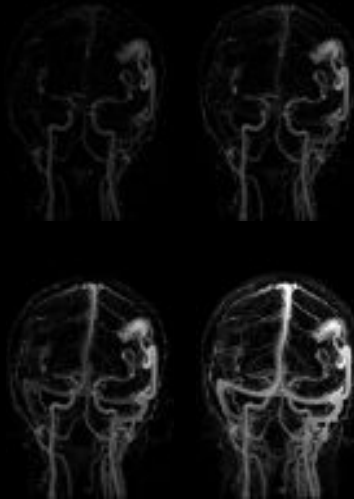
Inhance 3D IFIR



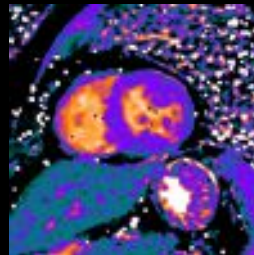
Short Axis PS MDE
Dark blood



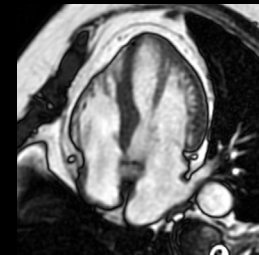
Short-Axis Stress
Time Course



3D TRICKS
2.2 sec./phase
0.9 x 1.3 x 4 mm



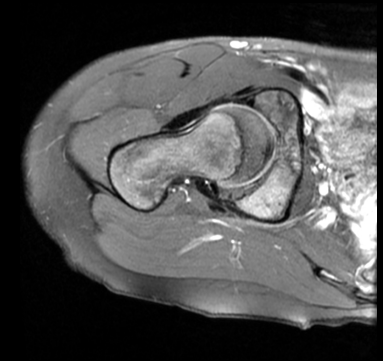
Short Axis
Native
T1 Map



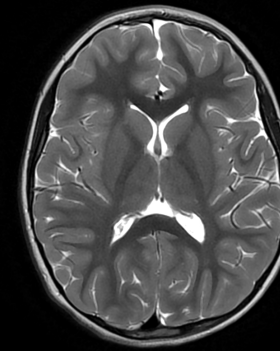
FIESTA Cine, 4-chamber view
2.2 x 2.0 x 6.0 mm



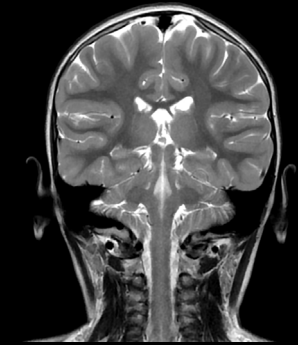
Coronal T1



Axial PD Fat Sat



Axial T2 PROPELLER
4 mm



Coronal T2 PROPELLER
4 mm

PaedWorks

Specialized protocols to simply address the needs of your smallest, most fragile patients. PROPELLER can be combined with Auto Navigator and diffusion imaging for patient-friendly, free-breathing exams.

Leverage capabilities previously out of reach

New applications and advancements in the SIGNA™ Works AIR™ IQ Edition give you unique capabilities. From bone imaging to complete free-breathing exams for motion-free abdominal imaging, you can reach beyond limitations and do more.

Accelerate scan times with HyperWorks

The HyperWorks package now includes the next generation of HyperSense and HyperMAVRIC SL. Looking to acquire high-resolution 3D images in less time? HyperSense now offers additional sequences like dynamic T1 imaging for breast, liver, and prostate, as well as everyday scans like MENSA for MSK and MP-RAGE for the brain. And HyperMAVRIC SL automatically tailors the acquisition to the patient's MR-Conditional implant, scanning 40% faster with higher resolution. It also enables isotropic imaging.

Improve image quality with additional motion correction

This software edition also includes applications to minimize effects of motion on routine imaging with an enhanced version of PROMO for motion robust neuro imaging and motion-corrected time course for cardiac perfusion imaging.

See bones like never before with oZTEo

With this new application for imaging cortical bone surfaces, based on the radial ZTE application, you can be a one-stop shop for bone imaging and add considerable clinical value to your orthopedic exams. Take oZTEo even further with Volume Illumination to create realistic 3D renderings.

Breathe easy with free-breathing, fast and consistent body scans

Take motion out of the MR equation with our body imaging suite. Regardless of patient age, pathology or condition, these motion-free applications help you overcome daily challenges encountered with sequences like T2, diffusion and dynamic T1, SnapShot SSFSE T2, eDWI and FOCUS. New free-breathing navigators include DISCO Star and LAVA Star.

Take advantage of diverse, advanced diffusion imaging

Reduce distortion with PROGRES, increase spatial resolution with MUSE, image smaller FOVs with FOCUS, or reduce scan time on FSE-based diffusion with PROPELLER DWI. This software edition also includes MAGiC DWI, which synthetically generates higher b-value imaging to offer scan-time savings and improved SNR. And your workflow will also benefit with the automatic generation of ADC maps and other advanced diffusion tools.

Offer patient-friendly cardiac exams

ViosWorks leverages deep learning and the imaging analytic power of the Arterys™ cloud-based platform to precisely visualize and quantify cardiac flow in a single, free-breathing acquisition.

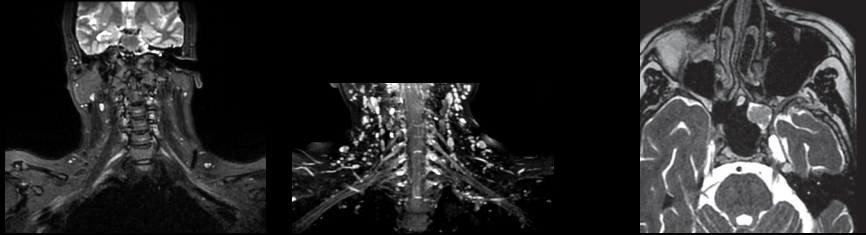
Better visualize vessel walls and plaque

This black blood imaging technique with Motion Sensitive Driven Equilibrium allows for better vessel wall contrast and depiction of plaque. It can also be used for hemorrhage detection, plaque segmentation and distinguishing fat from plaque.

HyperWorks*

HyperCube

By tailoring the FOV to the anatomy coverage on 3D sequences, HyperCube accelerates volumetric scans while improving detail.

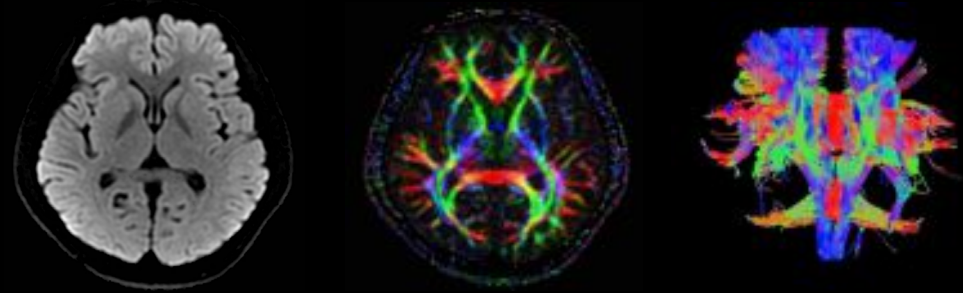


Coronal HyperCube T2 Flex with HyperSense
1.4 x 1.4 x 1.4 mm
3:24 min.

Axial T2 HyperCube
0.7 x 0.8 x 0.8 mm
2:31 min.

HyperBand

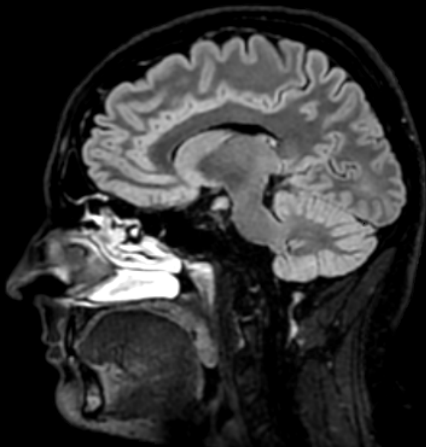
Reduce scan time by 50% or double your coverage without adding extra scan time with HyperBand.



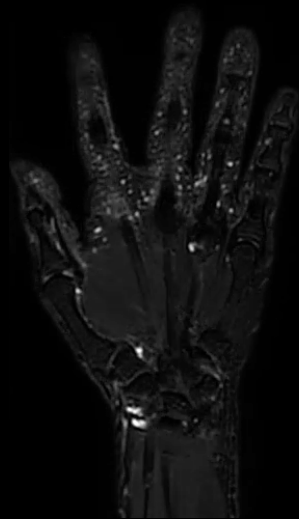
Diffusion Tensor Imaging with HyperBand
40 Directions
120 x 120, 1:53 min.

HyperSense

Speed the majority of your key 3D clinical scans including dynamic scans or push the spatial resolution for finer detail with HyperSense.



FLAIR Cube with HyperSense



Coronal T2w Cube Flex with HyperSense, HyperCube
FOV 25 cm, Th/Sp 1/-0.5 mm
256 x 256, 3:11 min.



Coronal CE LAVA Flex with HyperSense, HyperCube
FOV 25 cm, Th/Sp 1/-0.5 mm
288 x 192, 2:39 min.



Axial 3D TOF COW with HyperSense
0.7 x 0.8 x 1.0 mm
2:38 min.

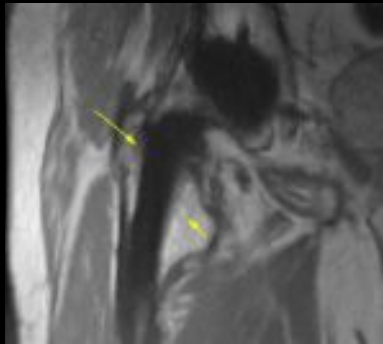


Axial T2 Cube with HyperSense
1.0 x 1.0 x 2.0 mm

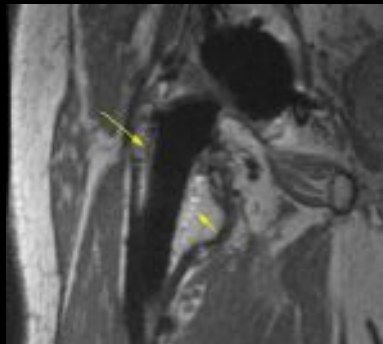
* Purchasable option.

MAVRIC SL and HyperMAVRIC SL*

Use MAVRIC SL with HyperMAVRIC SL, which automatically tailors the acquisition to the patient's MR-Conditional implant, scanning 40% faster with higher resolution. It also enables isotropic imaging.



MAVRIC SL PD
0.4 x 0.6 x 4 mm



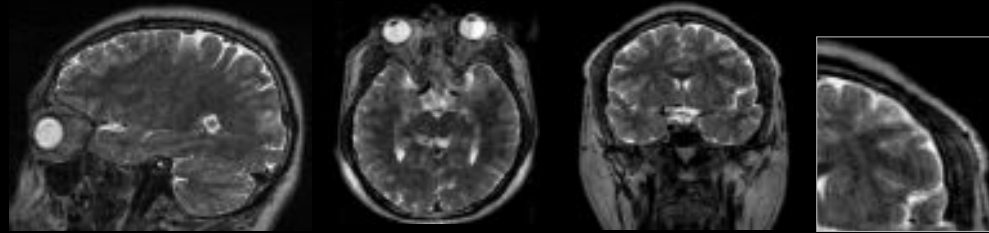
HyperMAVRIC SL PD
1.3 mm isotropic

Fibrous membrane formation in femur that was not appreciated in a conventional acquisition or same scan time.

Motion correction and bone imaging

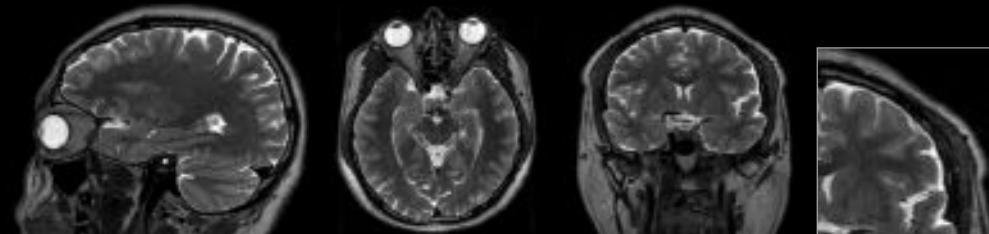
PROMO*

Minimize the effects of motion on routine imaging with an enhanced version of PROMO for motion robust neuro imaging and motion-corrected time course for cardiac perfusion imaging.



Without PROMO

T2 Cube
288 x 288
FOV 25 cm
1.2 mm slice
4:13 min.



With PROMO

T2 Cube
with PROMO
288 x 288
FOV 25 cm
1.2 mm slice
4:20 min.

oZTEo*

oZTEo, for imaging cortical bone surfaces, is inherently motion-insensitive and complements a conventional MR soft-tissue exam to deliver 3D isotropic imaging with familiar bright bone contrast.



Sagittal oZTEo skull
1.2 x 1.2 x 1.2 mm
3:00 min./140 slices



Skull in weighted MIP



Sagittal oZTEo cervical vertebrae in MIP
1.2 x 1.2 x 1.2 mm
3:09 min./80 slices



Cervical vertebrae in volume rendering



Shoulder
1.0 x 1.0 x 1.0 mm
3:25 min.

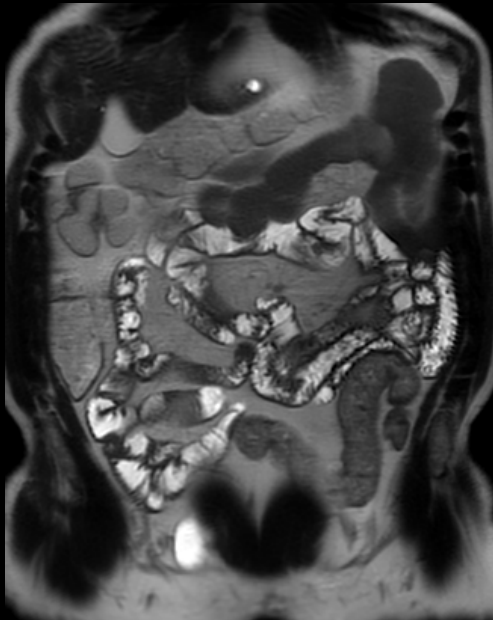


Hand
0.8 x 0.8 x 0.8 mm
4:57 min.

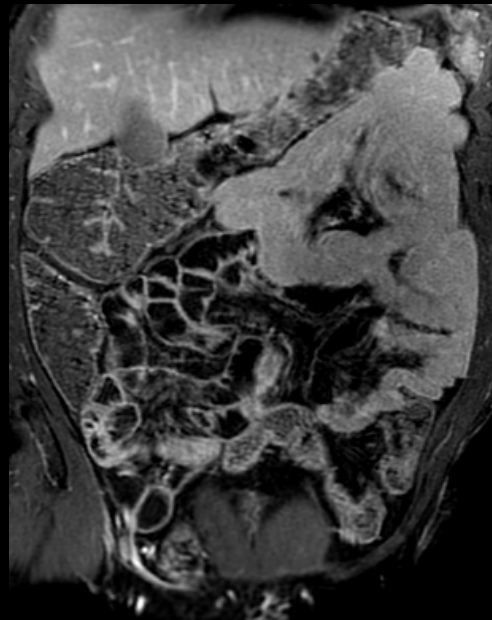
* Purchasable option.

Advanced body imaging

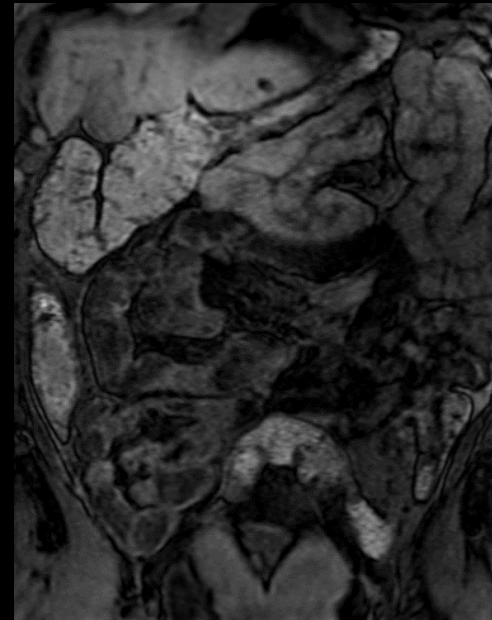
Minimize patient influence on exam outcomes with free-breathing body applications. With push-button, worry-free dynamic or delayed imaging for liver, pancreas, or renal imaging, you don't need to rely on the patient for great results. Also take body scans to the next level with the benefits of AIR™ Recon DL.



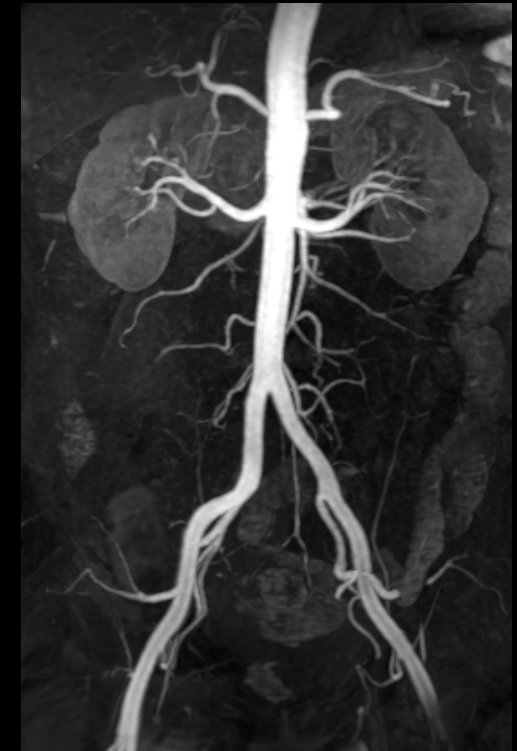
Coronal T2 SSFSE
1 x 1.2 x 4 mm
24 slices, 0:38 sec.



Coronal T1 LAVA ASPIR
1 x 1.2 x 3 mm
60 slices, 0:19 sec.



Coronal T1 Perfusion DISCO
1 x 1.6 x 2 mm
60 slices, 0:07 sec./phase

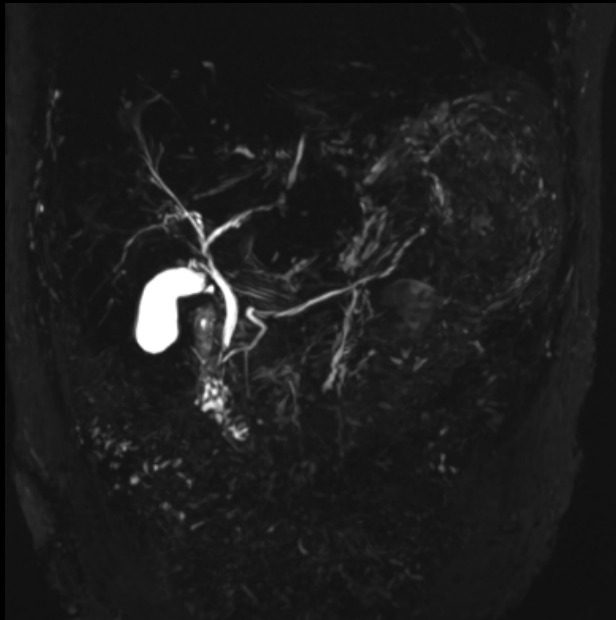


MIP from DISCO
Arterial phase

DISCO Star*, LAVA Star* and SnapShot SSFSE

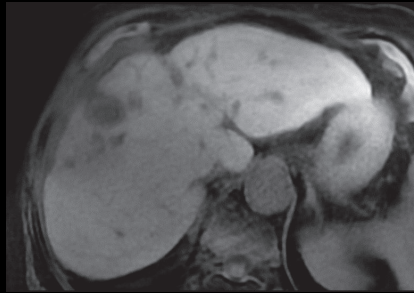
Get excellent image quality during abdominal scans without relying on patient cooperation or navigators. Provide a better patient experience with the ability of a complete free-breathing, robust abdominal exam that enhances conventional body imaging.

These applications provide image reconstruction in seconds without the need of any extra hardware for processing, so it doesn't disrupt the technologist's workflow. DISCO Star also allows for higher temporal resolution without sacrificing spatial resolution for dynamic imaging, and LAVA Star offers single-phase/delayed-phase imaging.

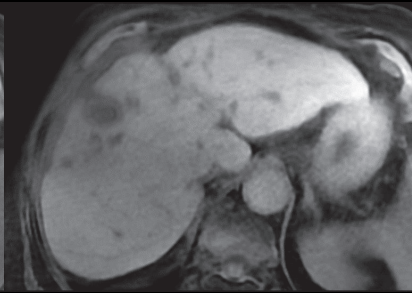


4mm slice thickness w/ Navigator
1:18 min.

DISCO Star



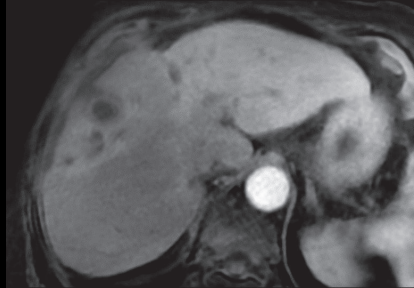
DISCO Star



Pre

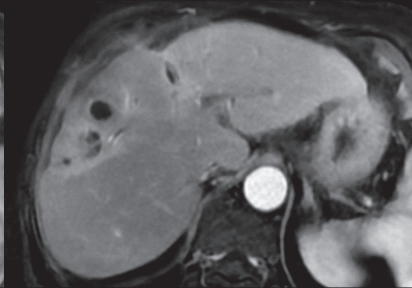
Early arterial

DISCO Star



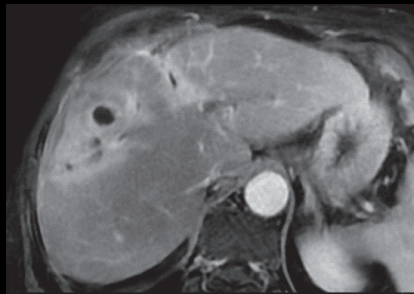
Arterial

DISCO Star

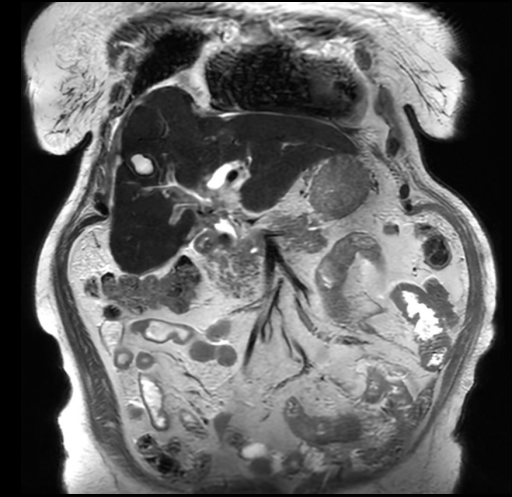


Portal

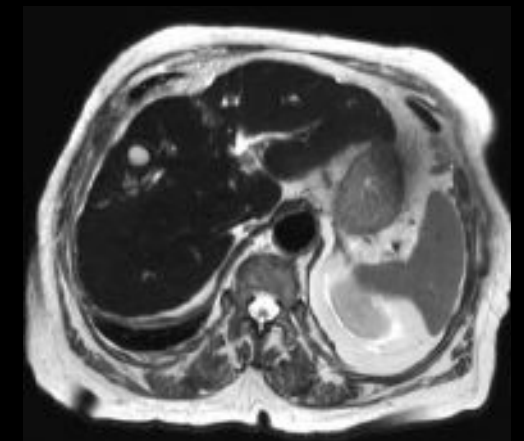
LAVA Star



Delayed



Coronal SnapShot
SSFSE with
AIR™ Recon DL

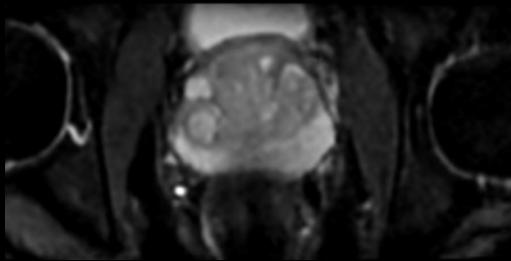


Coronal SnapShot
SSFSE with
AIR™ Recon DL

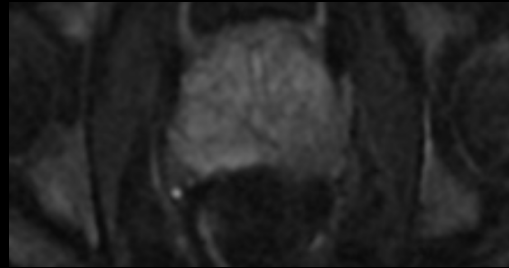
* Purchasable option.

Advanced diffusion imaging

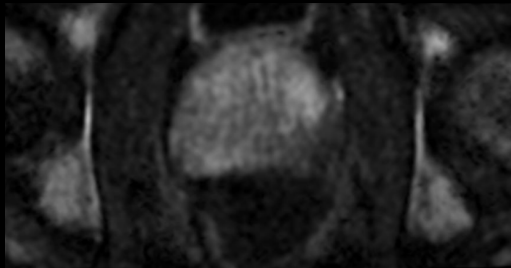
Elevate your ability to evaluate molecular function and tissue architecture with these advanced applications.



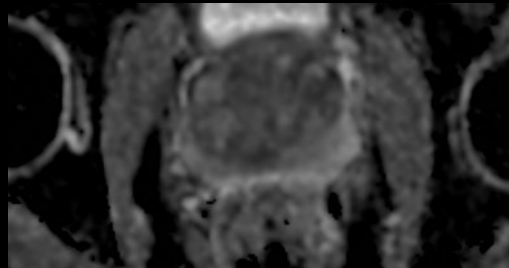
b50



b800



MAGiC DWI
b1400



ADC

FOCUS DWI with [AIR™ Recon DL](#) and MAGiC DWI, 1:53 sec.

MUSE*

Get sharper DWI/DTI images by reducing blurring and susceptibility induced distortions with MUSE. Use it in areas vulnerable to susceptibility artifacts, such as the brain, abdomen, and prostate.

PROGRES*

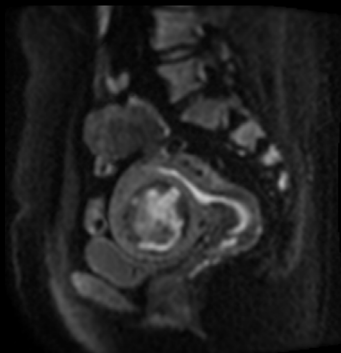
PROGRES, which includes Distortion Correction, addresses distortion in diffusion scans, providing improved image quality particularly in challenging areas like temporal lobes or base of skull.

FOCUS*

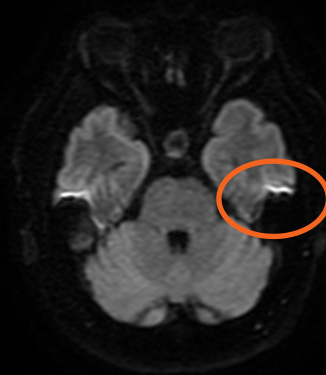
Enables small FOV imaging and increased resolution in the smallest anatomy such as brain, spine, abdomen, and prostate to help reduce distortion on diffusion scans.



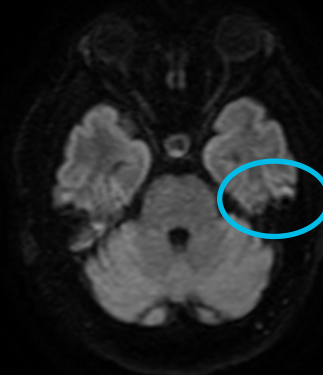
Coronal DWI MUSE
b800



Sagittal DWI MUSE
b800



Axial DWI
b1000



Axial DWI with PROGRES
b1000



Axial DWI MUSE with PROGRES
b1000

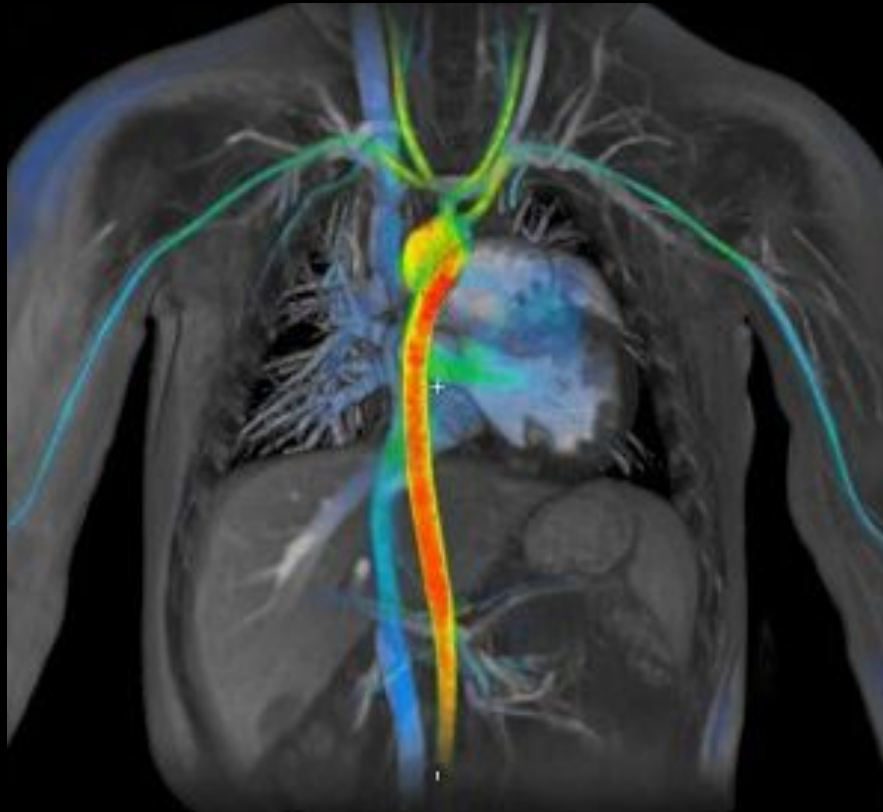
* Purchasable option.

Advanced vascular imaging

ViosWorks*

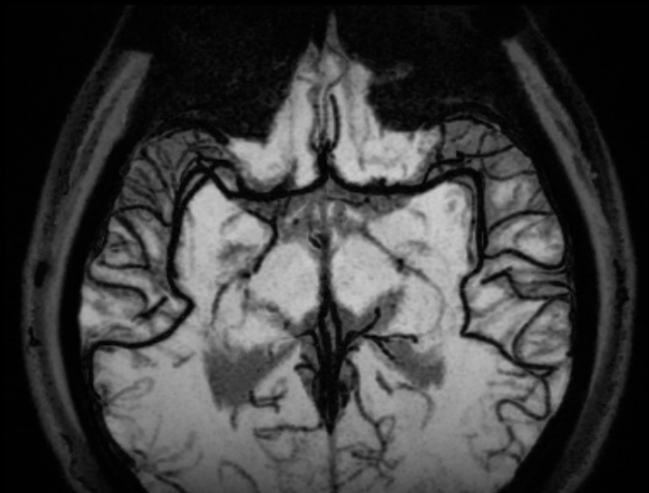
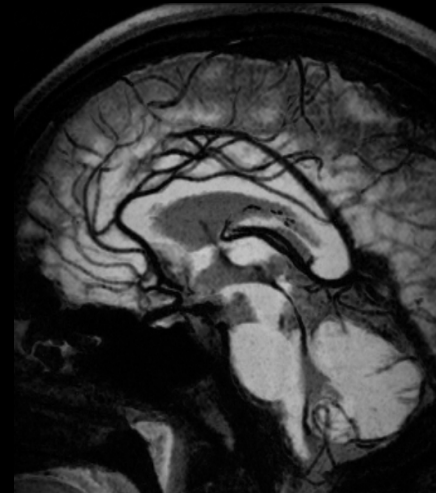
Complete a whole heart functional exam in a non-gated, free-breathing acquisition. ViosWorks 4D Flow accelerates acquisition using HyperKat reconstruction to capture routine clinical information and aid in imaging of complex anatomy.

ViosWorks 4D Flow helps you get functional cine information, along with flow velocity and direction of flow information.



Vessel wall imaging*

Visualize plaque and improve hemorrhage detection with Cube MSDE. Compatible with HyperSense, HyperCube and ASPIR fat saturation.



Sagittal 3D Cube T1 MSDE
MinIP reformats
0.8 x 0.8 x 0.8 mm



Advanced technology drives efficiency, speed and gradient imaging performance

The SIGNA™ Voyager Premier Edition features a wide bore magnet with up to 25% better homogeneity*. The uniformity of the magnetic field enables a usable 50 cm field of view and 4% more coverage per station. The system also uses Ultra High Efficiency (UHE) technology to generate exceptional imaging performance** using about half the amount of electrical current than a contemporary system.

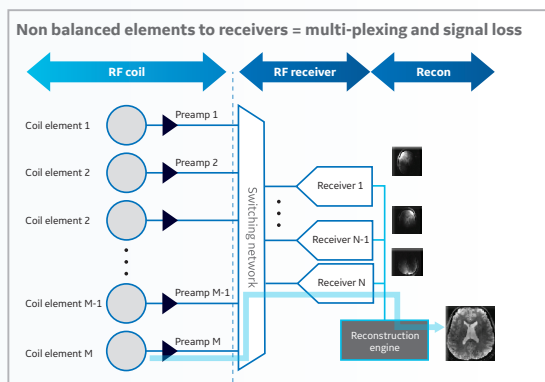
*Compared to previous generation SIGNA™ Voyager magnet.

**Gradient Imaging Performance 45 mT/m – 200 T/m/s.

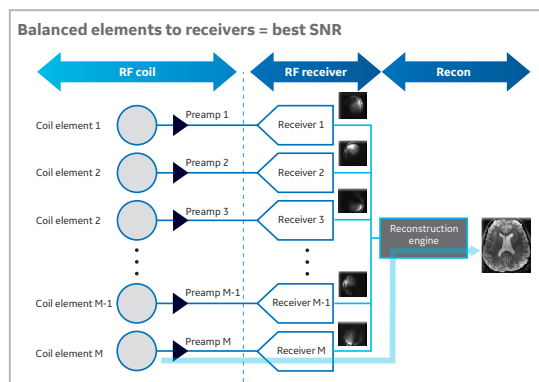
Technology that boosts image quality and your business

Channel count and digitizers don't mean a whole lot to medical professionals unless they translate into image quality and speed. That's why GE's Total Digital Imaging (TDI) easily captures clinician attention.

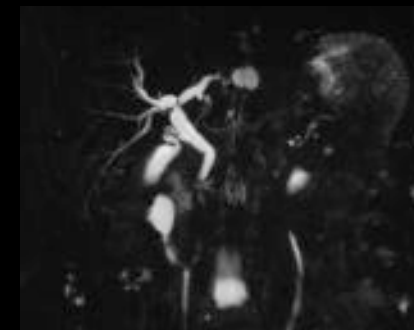
Through the use of simultaneous and independent analog-to-digital converters that can digitize inputs from each of the up to 65 separate RF channels, TDI truly uses the highest number of channels within your FOV. In other words, you can maximize parallel imaging, resolution and scan time without any movement of the table. How's that for optimum imaging performance?



Conventional MR



SIGNA™ Voyager Premier Edition with TDI



3D MRCP RT
1.1 x 1.4 x 1.6 mm
2:39 min.



Coronal T2 SSFSE 5mm
56 channels within FOV*
30ch AIR™ Anterior Array Coil +
16ch AIR™ Anterior Array Coil +
32ch Posterior Array Coil

*Subject to commercial availability



Designed to accelerate investment return

Cost efficiency is another area where SIGNA™ Voyager Premier Edition excels. Hospitals can start saving with improved site-ability and efficiency gains due to these key attributes:

- Compact 27 m² footprint, small chiller and reduced weight (600 kg/ 1320 lbs less*) help reduce set-up costs and the need for structural reinforcement.
- No helium refill required onsite during installation, and the magnet requires less helium than earlier SIGNA™ Voyager magnets.
- Improved thermal performance allows the magnet to stay cold longer during extended outages, and the system can immediately return to scanning when the power goes back on.
- Improved cold-head durability and Ultra High Efficiency gradients that yield a 25% efficiency gain together help facilities see profitability more rapidly.

* Compared to previous generation SIGNA™ Voyager magnet.

You no longer need to choose between consistent image quality, productivity and efficiency

Multiply the value of advanced 1.5T imaging in a smaller, more efficient MR with SIGNA™ Voyager Premier Edition. With patient-friendly AIR™ Coils that maximize comfort and intelligent AIR™ Workflow applications that reduce exam time, this wide-bore system makes use of UHE technology and Total Digital Imaging to consistently deliver premium imaging performance with a low-running cost.



Patient-friendly design maximizes comfort and versatility

- Adaptive AIR™ Coils provide 360° degree of coverage to accommodate all types of scans and patients
- Comfort Plus Table offers more room for all patients
- Optional lightweight, detachable eXpress Patient Table improves patient handling and comfort and allows for faster patient setup
- Free-breathing for any examination, including dynamic studies as well as compatible needle-free and 2D/3D motion-correction techniques



Efficient with streamlined imaging performance

- 25% efficiency gain with Ultra High Efficiency (UHE) gradient system
- Fast, clear Total Digital Imaging (TDI) increases SNR by 25%
- 80% of cases get improved IQ without added time with AIR™ Recon*
- Acquire higher SNR without a time penalty and get images virtually free of artifact with AIR™ Recon DL



Consistently accurate. Consistently quick.

- 59% productivity gain in exam set-up and 37% reduction in table time with AIR Touch™
- 5x faster set-up time & 4x fewer mouse clicks with AIR x™*
- 50% faster acquisition time with HyperWorks

* Results may vary.



For more information, visit gehealthcare.com/mr or contact your GE Healthcare Sales Representative.

GE Healthcare is the \$18 billion healthcare business of GE (NYSE: GE). As a leading global medical technology and digital solutions innovator, GE Healthcare enables clinicians to make faster, more informed decisions through intelligent devices, data analytics, applications and services, supported by its Edison intelligence platform. With over 100 years of healthcare industry experience and around 50,000 employees globally, the company operates at the center of an ecosystem working toward precision health, digitizing healthcare, helping drive productivity and improve outcomes for patients, providers, health systems and researchers around the world.

Follow us on Facebook, LinkedIn, Twitter, and Insights for the latest news, or visit our website www.gehealthcare.com for more information.

1 Zochowski, K., Miranda, M., Cheung, J., Argentieri, E., Lin, B., Kaushik, S., Burge, A., Potter, H. and Koff, M., 2019. MRI of Hip Arthroplasties: Comparison of Isotropic Multiacquisition Variable-Resonance Image Combination Selective (MAVRIC SL) Acquisitions With a Conventional MAVRIC SL Acquisition. *American Journal of Roentgenology*, 213(6), pp.W277-W286.

2 Dewey, M., Schink, T. and Dewey, C., 2007. Claustrophobia during magnetic resonance imaging: Cohort study in over 55,000 patients. *Journal of Magnetic Resonance Imaging*, 26(5), pp.1322-1327.

© 2021 General Electric Company – All rights reserved.

GE Healthcare reserves the right to make changes in specifications and features shown herein, or discontinue the product described at any time without notice or obligation. Contact your GE Healthcare representative for the most current information.

GE, the GE Monogram, SIGNA, AIR, AIR Touch, and AIR x are trademarks of General Electric Company.

SIGNA Voyager Premier Edition is registered as SIGNA Voyager/ SIGNA Voyager Quantum.

GE Healthcare, a division of General Electric Company. GE Medical Systems, Inc., doing business as GE Healthcare.